

Berger Realty

Since 1926

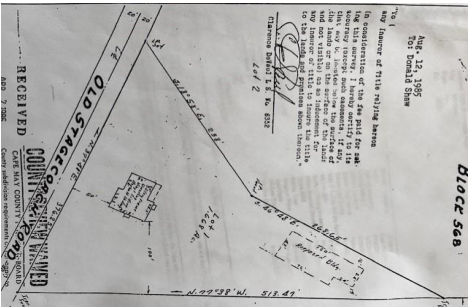


Berger Realty, Inc
1330 Bay Avenue
Ocean City, NJ 08226
609-391-1330/609-391-1300
info@bergerrealty.com



1299 Stagecoach, Palermo, NJ, 08223

Price \$299,000.00



PROPERTY DETAILS

Total Rooms	
Bedrooms	0
Baths Full	0
Baths Half	0
Year Built	
Type	Residential Vacant Lot
Block Number	568
Listing #	240865
Taxes	1610.00

COMMENTS

Commercial lot in a great location in Upper Township. Property has a foundation which might be useable. Second old foundation on the property that had never been used....

PROPERTY FEATURES

CONTACT

Ask for Donna M. Drohan
Berger Realty Inc
1330 Bay Avenue, Ocean City
Call:
Email to: dmd@bergerrealty.com

Scan to see Property page.



Berger Realty

Since 1926

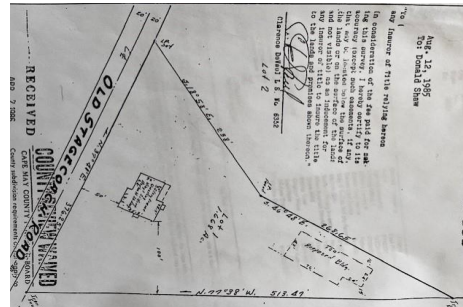


Berger Realty, Inc
1330 Bay Avenue
Ocean City, NJ 08226
609-391-1330/609-391-1300
info@bergerrealty.com



1299 Stagecoach, Palermo, NJ, 08223

Price \$299,000.00



PROPERTY DETAILS

Total Rooms	
Bedrooms	0
Baths Full	0
Baths Half	0
Year Built	
Type	Residential Vacant Lot
Block Number	568
Listing #	240865
Taxes	1610.00

COMMENTS

Commercial lot in a great location in Upper Township. Property has a foundation which might be useable. Second old foundation on the property that had never been used....

PROPERTY FEATURES

CONTACT

Ask for Donna M. Drohan
Berger Realty Inc
1330 Bay Avenue, Ocean City
Call:
Email to: dmd@bergerrealty.com

Scan to see Property page.

