

Berger Realty

Since 1926



Berger Realty, Inc.
3160 Asbury Avenue
Ocean City, NJ 08226
1-877-237-4371 / 609-399-0076
info@bergerrealty.com



2133 Route 47, Eldora, NJ, 08270

Price \$129,900.00

PROPERTY DETAILS

Total Rooms	
Bedrooms	0
Baths Full	0
Baths Half	0
Year Built	
Type	Vacant Lot
Block Number	5
Listing #	240810
Taxes	2822.00



COMMENTS

1.85 acre partially cleared lot with a new well and an expansive detached garage (approximate size 32' X 22') with electric, ideal for use as a workshop and storage space. There is also a 2-story house structure on the property....

PROPERTY FEATURES

CONTACT

Berger Realty Inc
3160 Asbury Ave.
Ocean City, NJ 08226
Call: (609) 399-0076
Email to: info@bergerrealty.com
Web: www.bergerrealty.com

Scan to see Property page.



Berger Realty

Since 1926



Berger Realty, Inc.
3160 Asbury Avenue
Ocean City, NJ 08226
1-877-237-4371 / 609-399-0076
info@bergerrealty.com

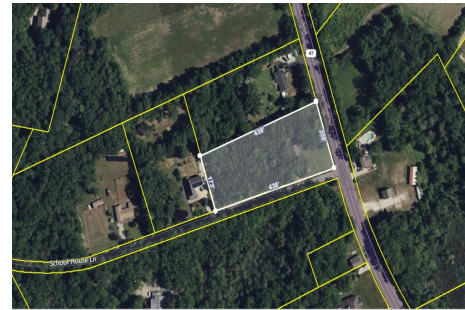


2133 Route 47, Eldora, NJ, 08270

Price \$129,900.00

PROPERTY DETAILS

Total Rooms	
Bedrooms	0
Baths Full	0
Baths Half	0
Year Built	
Type	Vacant Lot
Block Number	5
Listing #	240810
Taxes	2822.00



COMMENTS

1.85 acre partially cleared lot with a new well and an expansive detached garage (approximate size 32' X 22') with electric, ideal for use as a workshop and storage space. There is also a 2-story house structure on the property....

PROPERTY FEATURES

CONTACT

Berger Realty Inc
3160 Asbury Ave.
Ocean City, NJ 08226
Call: (609) 399-0076
Email to: info@bergerrealty.com
Web: www.bergerrealty.com

Scan to see Property page.

