

Berger Realty

Since 1926

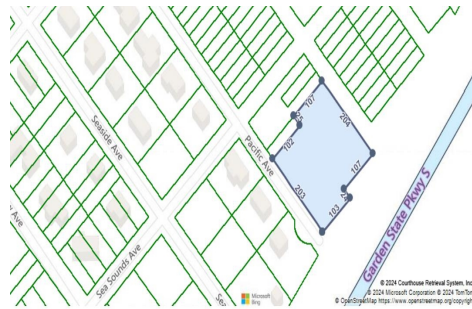


Berger Realty, Inc.
3160 Asbury Avenue
Ocean City, NJ 08226
1-877-237-4371 / 609-399-0076
info@bergerrealty.com



209 Pacific, Marmora, NJ, 08223

Price \$169,900.00



PROPERTY DETAILS

Total Rooms	
Bedrooms	0
Baths Full	0
Baths Half	0
Year Built	
Type	Residential Vacant Lot
Block Number	4
Listing #	240760
Taxes	2140.00

COMMENTS

Seize the opportunity to own a prime vacant lot in Marmora. Situated at the end of a quiet street, just minutes from Ocean City. Enjoy the tranquil surroundings and tight-knit community atmosphere of Upper Township, with easy access from Route 9 to the Garden State Parkway, and all the Shore Points. This location is close to local amenities and provides easy commuting. Upp...

PROPERTY FEATURES

CONTACT



Ask for Patricia Moss
Berger Realty Inc
3160 Asbury Avenue, Ocean City
Call: 609-335-4616
Email to: tcm@bergerrealty.com

Scan to see Property page.



Berger Realty

Since 1926

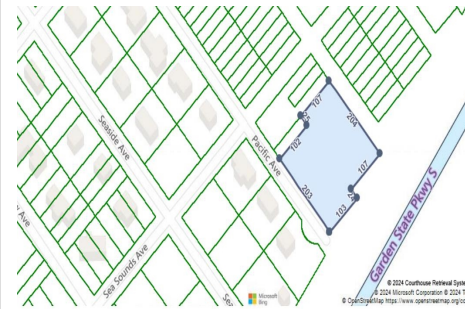


Berger Realty, Inc.
3160 Asbury Avenue
Ocean City, NJ 08226
1-877-237-4371 / 609-399-0076
info@bergerrealty.com



209 Pacific, Marmora, NJ, 08223

Price \$169,900.00



PROPERTY DETAILS

Total Rooms	
Bedrooms	0
Baths Full	0
Baths Half	0
Year Built	
Type	Residential Vacant Lot
Block Number	4
Listing #	240760
Taxes	2140.00

COMMENTS

Seize the opportunity to own a prime vacant lot in Marmora. Situated at the end of a quiet street, just minutes from Ocean City. Enjoy the tranquil surroundings and tight-knit community atmosphere of Upper Township, with easy access from Route 9 to the Garden State Parkway, and all the Shore Points. This location is close to local amenities and provides easy commuting. Upp...

PROPERTY FEATURES

CONTACT



Ask for Patricia Moss
Berger Realty Inc
3160 Asbury Avenue, Ocean City
Call: 609-335-4616
Email to: tcm@bergerrealty.com

Scan to see Property page.

