

Berger Realty

Since 1926



Berger Realty, Inc.
3160 Asbury Avenue
Ocean City, NJ 08226
1-877-237-4371 / 609-399-0076
info@bergerrealty.com



Rt. 50, Petersburg, NJ, 08270

Price \$599,900.00

PROPERTY DETAILS

Total Rooms	
Bedrooms	0
Baths Full	0
Baths Half	0
Year Built	
Type	Vacant Lot
Block Number	414
Listing #	240701
Taxes	3987.00

COMMENTS

Unlock a rare opportunity with this pristine 20.04-acre parcel of land nestled in desirable Upper Township, NJ. Just a short 15-minute drive to the beaches of Sea Isle City and Ocean City, this property offers the perfect balance of tranquility and convenience. Accessible via a private drive into a flag lot, this unique parcel boasts the potential for subdivision, allowing...

PROPERTY FEATURES

CONTACT



Ask for Sara Varani
Berger Realty Inc
3160 Asbury Avenue, Ocean City
Call:
Email to: sev@bergerrealty.com

Scan to see Property page.



Berger Realty

Since 1926



Berger Realty, Inc.
3160 Asbury Avenue
Ocean City, NJ 08226
1-877-237-4371 / 609-399-0076
info@bergerrealty.com



Rt. 50, Petersburg, NJ, 08270

Price \$599,900.00

PROPERTY DETAILS

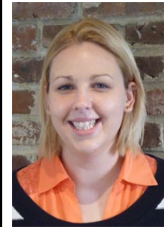
Total Rooms	
Bedrooms	0
Baths Full	0
Baths Half	0
Year Built	
Type	Vacant Lot
Block Number	414
Listing #	240701
Taxes	3987.00

COMMENTS

Unlock a rare opportunity with this pristine 20.04-acre parcel of land nestled in desirable Upper Township, NJ. Just a short 15-minute drive to the beaches of Sea Isle City and Ocean City, this property offers the perfect balance of tranquility and convenience. Accessible via a private drive into a flag lot, this unique parcel boasts the potential for subdivision, allowing...

PROPERTY FEATURES

CONTACT



Ask for Sara Varani
Berger Realty Inc
3160 Asbury Avenue, Ocean City
Call:
Email to: sev@bergerrealty.com

Scan to see Property page.

