

# Berger Realty

Since 1928

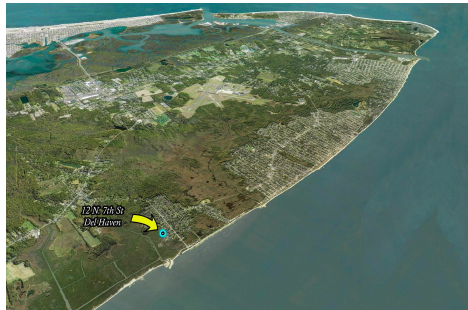


Berger Realty, Inc.  
3160 Asbury Avenue  
Ocean City, NJ 08226  
1-877-237-4371 / 609-399-0076  
info@bergerrealty.com



12 7th, Del Haven, NJ, 08251

Price \$99,000.00



### PROPERTY DETAILS

Total Rooms	
Bedrooms	0
Baths Full	0
Baths Half	0
Year Built	
Type	Vacant Lot
Block Number	393
Listing #	233190
Taxes	537.00

### COMMENTS

Large parcel measuring 280 feet in width and 100 feet in depth. WE have a copy of a 9-12-2008 Final Construction Plan, Variation Plan by Dante Guzzi Engineering for a Duplex with wetland buffers of 50 feet. See attached C Variance Resolution that passed. The buyer will be responsible for obtaining all necessary approvals, and the property will be sold in its current condi...

### PROPERTY FEATURES

### CONTACT



Ask for Evelyn "Evie" Schweibinz  
Berger Realty Inc  
3160 Asbury Avenue, Ocean City  
Call:  
Email to: [ems@bergerrealty.com](mailto:ems@bergerrealty.com)

Scan to see Property page.



# Berger Realty

Since 1928

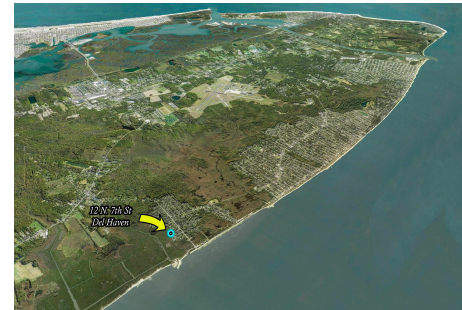


Berger Realty, Inc.  
3160 Asbury Avenue  
Ocean City, NJ 08226  
1-877-237-4371 / 609-399-0076  
info@bergerrealty.com



12 7th, Del Haven, NJ, 08251

Price \$99,000.00



### PROPERTY DETAILS

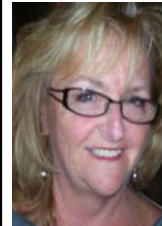
Total Rooms	
Bedrooms	0
Baths Full	0
Baths Half	0
Year Built	
Type	Vacant Lot
Block Number	393
Listing #	233190
Taxes	537.00

### COMMENTS

Large parcel measuring 280 feet in width and 100 feet in depth. WE have a copy of a 9-12-2008 Final Construction Plan, Variation Plan by Dante Guzzi Engineering for a Duplex with wetland buffers of 50 feet. See attached C Variance Resolution that passed. The buyer will be responsible for obtaining all necessary approvals, and the property will be sold in its current condi...

### PROPERTY FEATURES

### CONTACT



Ask for Evelyn "Evie" Schweibinz  
Berger Realty Inc  
3160 Asbury Avenue, Ocean City  
Call:  
Email to: [ems@bergerrealty.com](mailto:ems@bergerrealty.com)

Scan to see Property page.

