

# Berger Realty

Since 1926

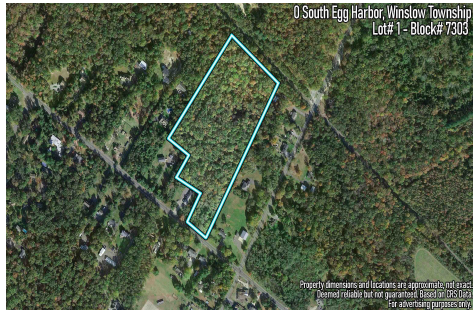


Berger Realty, Inc.  
3160 Asbury Avenue  
Ocean City, NJ 08226  
1-877-237-4371 / 609-399-0076  
info@bergerrealty.com



0 South Egg Harbor, Winslow Township, NJ, 08037

Price \$150,000.00



### PROPERTY DETAILS

<b>Total Rooms</b>	
<b>Bedrooms</b>	0
<b>Baths Full</b>	0
<b>Baths Half</b>	0
<b>Year Built</b>	
<b>Type</b>	Residential Vacant Lot
<b>Block Number</b>	7303
<b>Listing #</b>	233089
<b>Taxes</b>	3251.00

### COMMENTS

14 + Acres located in Winslow Twp, Hammonton area in PR1 zoning in a Pinelands Rural Development Area. Rural Residential Zoning permitted uses allow single family on 3.2 acres lots (possible 4 lots) or 1 Acre cluster development , agriculture, forestry, roadside retail and service,. Sale is as is where is seller makes no representation to the feasibility of subdividing th...

### PROPERTY FEATURES

### CONTACT



Ask for Alexandra Caulfield  
Berger Realty Inc  
3160 Asbury Avenue, Ocean City  
Call: 302-593-9119  
Email to: aic@bergerrealty.com

Scan to see Property page.



# Berger Realty

Since 1926



Berger Realty, Inc.  
3160 Asbury Avenue  
Ocean City, NJ 08226  
1-877-237-4371 / 609-399-0076  
info@bergerrealty.com



0 South Egg Harbor, Winslow Township, NJ, 08037

Price \$150,000.00



### PROPERTY DETAILS

<b>Total Rooms</b>	
<b>Bedrooms</b>	0
<b>Baths Full</b>	0
<b>Baths Half</b>	0
<b>Year Built</b>	
<b>Type</b>	Residential Vacant Lot
<b>Block Number</b>	7303
<b>Listing #</b>	233089
<b>Taxes</b>	3251.00

### COMMENTS

14 + Acres located in Winslow Twp, Hammonton area in PR1 zoning in a Pinelands Rural Development Area. Rural Residential Zoning permitted uses allow single family on 3.2 acres lots (possible 4 lots) or 1 Acre cluster development , agriculture, forestry, roadside retail and service,. Sale is as is where is seller makes no representation to the feasibility of subdividing th...

### PROPERTY FEATURES

### CONTACT



Ask for Alexandra Caulfield  
Berger Realty Inc  
3160 Asbury Avenue, Ocean City  
Call: 302-593-9119  
Email to: aic@bergerrealty.com

Scan to see Property page.

