



Berger Realty, Inc.  
3160 Asbury Avenue  
Ocean City, NJ 08226  
1-877-237-4371 / 609-399-0076  
info@bergerrealty.com



9 Sea Trail, Cold Spring, NJ, 08204

Price \$1,425,000.00

#### PROPERTY DETAILS

|              |                        |
|--------------|------------------------|
| Total Rooms  |                        |
| Bedrooms     | 0                      |
| Baths Full   | 0                      |
| Baths Half   | 0                      |
| Year Built   |                        |
| Type         | Residential Vacant Lot |
| Block Number | 792                    |
| Listing #    | 232293                 |
| Taxes        | 10044.00               |



#### COMMENTS

*Rare opportunity for an amazing building lot in a coveted location nestled in between Cape May City and Cape May Point! With almost 74,000 sqft, this lot is the largest in the development and is located at the end of the cul-de-sac adjacent the walking path, leading to the beach. This 10 lot subdivision is located along the 200 acre South Cape May Meadows preserve, a haven...*

#### PROPERTY FEATURES

#### CONTACT



Ask for Sara Varani  
Berger Realty Inc  
3160 Asbury Avenue, Ocean City  
Call:  
Email to: sev@bergerrealty.com

Scan to see Property page.



Berger Realty, Inc.  
3160 Asbury Avenue  
Ocean City, NJ 08226  
1-877-237-4371 / 609-399-0076  
info@bergerrealty.com



9 Sea Trail, Cold Spring, NJ, 08204

Price \$1,425,000.00

#### PROPERTY DETAILS

|              |                        |
|--------------|------------------------|
| Total Rooms  |                        |
| Bedrooms     | 0                      |
| Baths Full   | 0                      |
| Baths Half   | 0                      |
| Year Built   |                        |
| Type         | Residential Vacant Lot |
| Block Number | 792                    |
| Listing #    | 232293                 |
| Taxes        | 10044.00               |

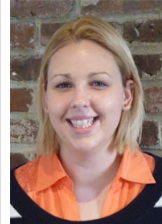


#### COMMENTS

*Rare opportunity for an amazing building lot in a coveted location nestled in between Cape May City and Cape May Point! With almost 74,000 sqft, this lot is the largest in the development and is located at the end of the cul-de-sac adjacent the walking path, leading to the beach. This 10 lot subdivision is located along the 200 acre South Cape May Meadows preserve, a haven...*

#### PROPERTY FEATURES

#### CONTACT



Ask for Sara Varani  
Berger Realty Inc  
3160 Asbury Avenue, Ocean City  
Call:  
Email to: sev@bergerrealty.com

Scan to see Property page.

