

# Berger Realty

Since 1926

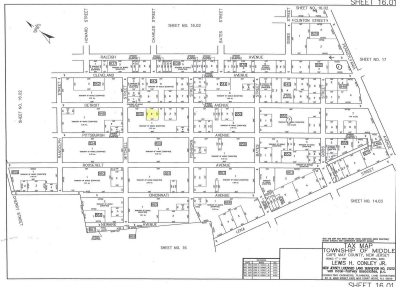


Berger Realty, Inc  
1330 Bay Avenue  
Ocean City, NJ 08226  
609-391-1330/609-391-1300  
info@bergerrealty.com



Detroit, Whitesboro, NJ, 08210

Price \$5,999.00



### PROPERTY DETAILS

Total Rooms	
Bedrooms	0
Baths Full	0
Baths Half	0
Year Built	
Type	Residential Vacant Lot
Block Number	849
Listing #	232200
Taxes	77.00

### COMMENTS

Residential lot on paper street Detroit Avenue (approximately 100X100), off of Pennsylvania Avenue. All permits, applications and approvals are at the buyer's expense. This lot is being sold in it's "as is, where is" condition. Call today for more details....

### PROPERTY FEATURES

### CONTACT



Ask for Ludwik Samselski  
Berger Realty Inc  
1330 Bay Avenue, Ocean City  
Call: 609-545-0757  
Email to: ls@bergerrealty.com

Scan to see Property page.



# Berger Realty

Since 1926

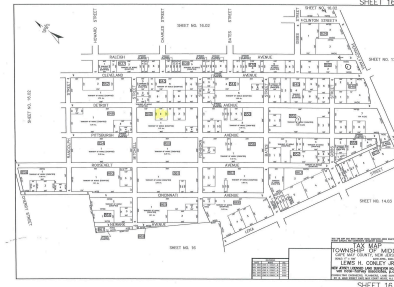


Berger Realty, Inc  
1330 Bay Avenue  
Ocean City, NJ 08226  
609-391-1330/609-391-1300  
info@bergerrealty.com



Detroit, Whitesboro, NJ, 08210

Price \$5,999.00



### PROPERTY DETAILS

Total Rooms	
Bedrooms	0
Baths Full	0
Baths Half	0
Year Built	
Type	Residential Vacant Lot
Block Number	849
Listing #	232200
Taxes	77.00

### COMMENTS

Residential lot on paper street Detroit Avenue (approximately 100X100), off of Pennsylvania Avenue. All permits, applications and approvals are at the buyer's expense. This lot is being sold in it's "as is, where is" condition. Call today for more details....

### PROPERTY FEATURES

### CONTACT



Ask for Ludwik Samselski  
Berger Realty Inc  
1330 Bay Avenue, Ocean City  
Call: 609-545-0757  
Email to: ls@bergerrealty.com

Scan to see Property page.

