

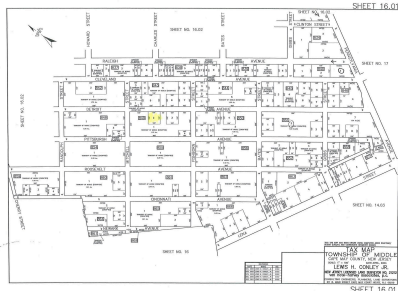


Berger Realty, Inc.  
3160 Asbury Avenue  
Ocean City, NJ 08226  
1-877-237-4371 / 609-399-0076  
info@bergerrealty.com



Detroit, Whitesboro, NJ, 08210

Price \$5,999.00



#### PROPERTY DETAILS

Total Rooms	0
Bedrooms	0
Baths Full	0
Baths Half	0
Year Built	
Type	Residential Vacant Lot
Block Number	849
Listing #	232200
Taxes	77.00

#### COMMENTS

Residential lot on paper street Detroit Avenue (approximately 100X100), off of Pennsylvania Avenue. All permits, applications and approvals are at the buyer's expense. This lot is being sold in it's "as is, where is" condition. Call today for more details....

#### PROPERTY FEATURES

#### CONTACT



Ask for George Cash  
Berger Realty Inc  
3160 Asbury Avenue, Ocean City  
Call: 609-231-3586  
Email to: gbc@bergerrealty.com

Scan to see Property page.

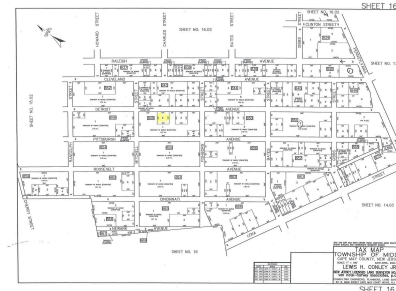


Berger Realty, Inc.  
3160 Asbury Avenue  
Ocean City, NJ 08226  
1-877-237-4371 / 609-399-0076  
info@bergerrealty.com



Detroit, Whitesboro, NJ, 08210

Price \$5,999.00



#### PROPERTY DETAILS

Total Rooms	0
Bedrooms	0
Baths Full	0
Baths Half	0
Year Built	
Type	Residential Vacant Lot
Block Number	849
Listing #	232200
Taxes	77.00

#### COMMENTS

Residential lot on paper street Detroit Avenue (approximately 100X100), off of Pennsylvania Avenue. All permits, applications and approvals are at the buyer's expense. This lot is being sold in it's "as is, where is" condition. Call today for more details....

#### PROPERTY FEATURES

#### CONTACT



Ask for George Cash  
Berger Realty Inc  
3160 Asbury Avenue, Ocean City  
Call: 609-231-3586  
Email to: gbc@bergerrealty.com

Scan to see Property page.

