

# Berger Realty

Since 1926

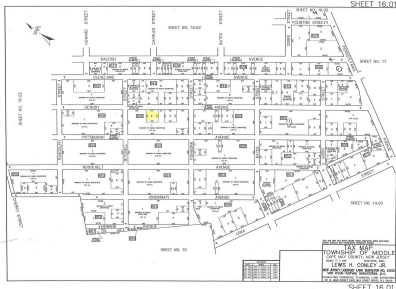


Berger Realty, Inc.  
3160 Asbury Avenue  
Ocean City, NJ 08226  
1-877-237-4371 / 609-399-0076  
info@bergerrealty.com



Detroit, Whitesboro, NJ, 08210

Price \$5,999.00



### PROPERTY DETAILS

<b>Total Rooms</b>	
<b>Bedrooms</b>	0
<b>Baths Full</b>	0
<b>Baths Half</b>	0
<b>Year Built</b>	
<b>Type</b>	Residential Vacant Lot
<b>Block Number</b>	849
<b>Listing #</b>	232200
<b>Taxes</b>	77.00

### COMMENTS

Residential lot on paper street Detroit Avenue (approximately 100X100), off of Pennsylvania Avenue. All permits, applications and approvals are at the buyer's expense. This lot is being sold in it's "as is, where is" condition. Call today for more details....

### PROPERTY FEATURES

### CONTACT



Ask for Brandon Howell  
Berger Realty Inc  
3160 Asbury Avenue, Ocean City  
Call: 609-964-6369  
Email to: bah@bergerrealty.com

Scan to see Property page.



# Berger Realty

Since 1926

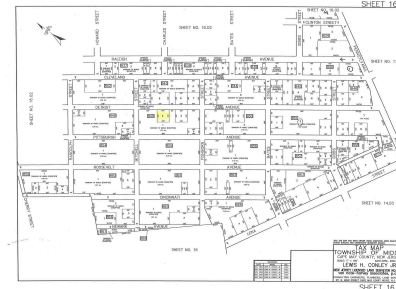


Berger Realty, Inc.  
3160 Asbury Avenue  
Ocean City, NJ 08226  
1-877-237-4371 / 609-399-0076  
info@bergerrealty.com



Detroit, Whitesboro, NJ, 08210

Price \$5,999.00



### PROPERTY DETAILS

<b>Total Rooms</b>	
<b>Bedrooms</b>	0
<b>Baths Full</b>	0
<b>Baths Half</b>	0
<b>Year Built</b>	
<b>Type</b>	Residential Vacant Lot
<b>Block Number</b>	849
<b>Listing #</b>	232200
<b>Taxes</b>	77.00

### COMMENTS

Residential lot on paper street Detroit Avenue (approximately 100X100), off of Pennsylvania Avenue. All permits, applications and approvals are at the buyer's expense. This lot is being sold in it's "as is, where is" condition. Call today for more details....

### PROPERTY FEATURES

### CONTACT



Ask for Brandon Howell  
Berger Realty Inc  
3160 Asbury Avenue, Ocean City  
Call: 609-964-6369  
Email to: bah@bergerrealty.com

Scan to see Property page.

