

Berger Realty

Since 1926

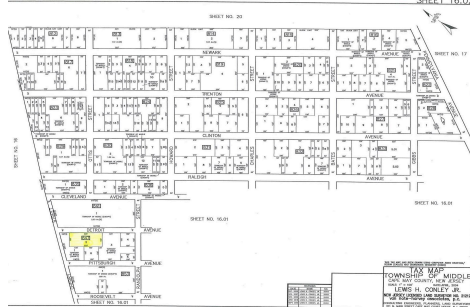


Berger Realty, Inc.
3160 Asbury Avenue
Ocean City, NJ 08226
1-877-237-4371 / 609-399-0076
info@bergerrealty.com



Detroit, Whitesboro, NJ, 08210

Price \$10,999.00



PROPERTY DETAILS

Total Rooms	0
Bedrooms	0
Baths Full	0
Baths Half	0
Year Built	
Type	Residential Vacant Lot
Block Number	847
Listing #	232199
Taxes	170.00

COMMENTS

Large residential lot on paper street Detroit Avenue (approximately 225X100), near Cherry Street. All permits, applications and approvals are at the buyer's expense. This lot is being sold in it's "as is, where is" condition....

PROPERTY FEATURES

CONTACT



Ask for Tanya Pinkerton
Berger Realty Inc
3160 Asbury Avenue, Ocean City
Call: 609-442-0418
Email to: tp@bergerrealty.com

Scan to see Property page.



Berger Realty

Since 1926

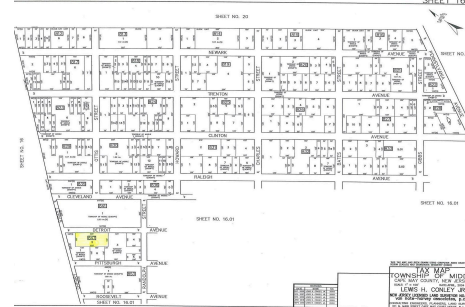


Berger Realty, Inc.
3160 Asbury Avenue
Ocean City, NJ 08226
1-877-237-4371 / 609-399-0076
info@bergerrealty.com



Detroit, Whitesboro, NJ, 08210

Price \$10,999.00



PROPERTY DETAILS

Total Rooms	0
Bedrooms	0
Baths Full	0
Baths Half	0
Year Built	
Type	Residential Vacant Lot
Block Number	847
Listing #	232199
Taxes	170.00

COMMENTS

Large residential lot on paper street Detroit Avenue (approximately 225X100), near Cherry Street. All permits, applications and approvals are at the buyer's expense. This lot is being sold in it's "as is, where is" condition....

PROPERTY FEATURES

CONTACT



Ask for Tanya Pinkerton
Berger Realty Inc
3160 Asbury Avenue, Ocean City
Call: 609-442-0418
Email to: tp@bergerrealty.com

Scan to see Property page.

