

# Berger Realty

Since 1926

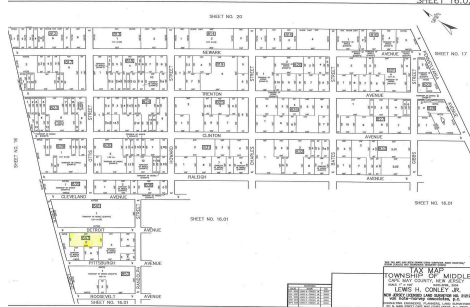


Berger Realty, Inc.  
3160 Asbury Avenue  
Ocean City, NJ 08226  
1-877-237-4371 / 609-399-0076  
info@bergerrealty.com



Detroit, Whitesboro, NJ, 08210

Price \$10,999.00



### PROPERTY DETAILS

<b>Total Rooms</b>	0
<b>Bedrooms</b>	0
<b>Baths Full</b>	0
<b>Baths Half</b>	0
<b>Year Built</b>	
<b>Type</b>	Residential Vacant Lot
<b>Block Number</b>	847
<b>Listing #</b>	232199
<b>Taxes</b>	170.00

### COMMENTS

Large residential lot on paper street Detroit Avenue (approximately 225X100), near Cherry Street. All permits, applications and approvals are at the buyer's expense. This lot is being sold in it's "as is, where is" condition....

### PROPERTY FEATURES

### CONTACT



Ask for Nicole Williams  
Berger Realty Inc  
3160 Asbury Avenue, Ocean City  
Call: 856-357-6463  
Email to: ncw@bergerrealty.com

Scan to see Property page.



# Berger Realty

Since 1926

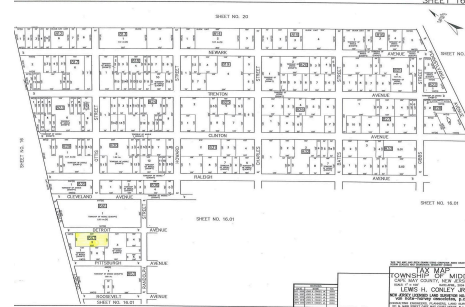


Berger Realty, Inc.  
3160 Asbury Avenue  
Ocean City, NJ 08226  
1-877-237-4371 / 609-399-0076  
info@bergerrealty.com



Detroit, Whitesboro, NJ, 08210

Price \$10,999.00



### PROPERTY DETAILS

<b>Total Rooms</b>	0
<b>Bedrooms</b>	0
<b>Baths Full</b>	0
<b>Baths Half</b>	0
<b>Year Built</b>	
<b>Type</b>	Residential Vacant Lot
<b>Block Number</b>	847
<b>Listing #</b>	232199
<b>Taxes</b>	170.00

### COMMENTS

Large residential lot on paper street Detroit Avenue (approximately 225X100), near Cherry Street. All permits, applications and approvals are at the buyer's expense. This lot is being sold in it's "as is, where is" condition....

### PROPERTY FEATURES

### CONTACT



Ask for Nicole Williams  
Berger Realty Inc  
3160 Asbury Avenue, Ocean City  
Call: 856-357-6463  
Email to: ncw@bergerrealty.com

Scan to see Property page.

