



Berger Realty, Inc.
3160 Asbury Avenue
Ocean City, NJ 08226
1-877-237-4371 / 609-399-0076
info@bergerrealty.com



1029 Shore Road, Palermo, NJ, 08223

Price \$1,800,000.00

PROPERTY DETAILS

Total Rooms	15
Bedrooms	8
Baths Full	5
Baths Half	2
Year Built	1983
Type	Single Family
Block Number	575
Listing #	231759
Taxes	14848.00

COMMENTS

WATERFRONT Fresh Water Spring Fed Lake, this 6 acre lake with all its natural beauty. Egrets, Great Blue Herons, Swans, Canadian Geese, Otters, Big Mouth Bass, Blue Giles and more. Private Estate sits on 11.44 acres, the home is a Georgian Colonial style that boasts the architectural design of Red Brick, symmetrical windows and dormers. Beautifully landscaped, large o...

PROPERTY FEATURES

Exterior Brick	OutsideFeatures Patio Deck Enclosed/Covered Patio Porch Grill Cable TV Barn/Stables/Kennels Outside Shower In Ground Pool Sprinkler System	ParkingGarage Garage Parking Pad 2 Car Attached Auto Door Opener Assigned Parking Black Top Driveway Stone Driveway 4 car parking Gravel Driveway	OtherRooms Living Room Dining Room Kitchen Den/TV Room Eat-In-Kitchen Pantry Laundry/Utility Room Library/Study Workshop Great Room
InteriorFeatures Bar Walk in Closet Wall to Wall Carpet Fireplace- Wood	AppliancesIncluded Range Oven Microwave Oven Refrigerator Washer Dryer Dishwasher	Basement Partial Inside Entrance Masonry Floors/Wall Slab	Heating Gas Propane Electric Baseboard Space/Wall/Floor
Cooling Attic Fan Ceiling Fan Window Air Conditioning	HotWater Electric	Water Well	Sewer Septic

CONTACT

Ask for Marki Lyn Warlow
Berger Realty Inc

Scan to see Property page.



Berger Realty, Inc.
3160 Asbury Avenue
Ocean City, NJ 08226
1-877-237-4371 / 609-399-0076
info@bergerrealty.com



1029 Shore Road, Palermo, NJ, 08223

Price \$1,800,000.00

PROPERTY DETAILS

Total Rooms	15
Bedrooms	8
Baths Full	5
Baths Half	2
Year Built	1983
Type	Single Family
Block Number	575
Listing #	231759
Taxes	14848.00

COMMENTS

WATERFRONT Fresh Water Spring Fed Lake, this 6 acre lake with all its natural beauty. Egrets, Great Blue Herons, Swans, Canadian Geese, Otters, Big Mouth Bass, Blue Giles and more. Private Estate sits on 11.44 acres, the home is a Georgian Colonial style that boasts the architectural design of Red Brick, symmetrical windows and dormers. Beautifully landscaped, large o...

PROPERTY FEATURES

Exterior Brick	OutsideFeatures Patio Deck Enclosed/Covered Patio Porch Grill Cable TV Barn/Stables/Kennels Outside Shower In Ground Pool Sprinkler System	ParkingGarage Garage Parking Pad 2 Car Attached Auto Door Opener Assigned Parking Black Top Driveway Stone Driveway 4 car parking Gravel Driveway	OtherRooms Living Room Dining Room Kitchen Den/TV Room Eat-In-Kitchen Pantry Laundry/Utility Room Library/Study Workshop Great Room
InteriorFeatures Bar Walk in Closet Wall to Wall Carpet Fireplace- Wood	AppliancesIncluded Range Oven Microwave Oven Refrigerator Washer Dryer Dishwasher	Basement Partial Inside Entrance Masonry Floors/Wall Slab	Heating Gas Propane Electric Baseboard Space/Wall/Floor
Cooling Attic Fan Ceiling Fan Window Air Conditioning	HotWater Electric	Water Well	Sewer Septic

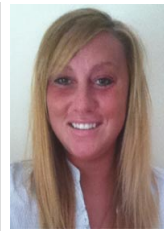
CONTACT

Ask for Marki Lyn Warlow
Berger Realty Inc

Scan to see Property page.



3160 Asbury Avenue, Ocean City
Call:
Email to: mlw@bergerrealty.com



3160 Asbury Avenue, Ocean City
Call:
Email to: mlw@bergerrealty.com

