



Berger Realty, Inc.  
3160 Asbury Avenue  
Ocean City, NJ 08226  
1-877-237-4371 / 609-399-0076  
info@bergerrealty.com



18 Eagles, Cape May Court House, NJ, 08210

Price \$1,399,000.00



#### PROPERTY DETAILS

Total Rooms	10
Bedrooms	4
Baths Full	3
Baths Half	1
Year Built	2023
Type	Single Family
Block Number	12.01
Listing #	231719
Taxes	12935.00

#### COMMENTS

*Impressive, newly constructed home located in a cul-de-sac for privacy and convenience. The home, in the unique style of 'Modern Farmhouse' architecture, is situated on a large, beautifully landscaped lot bordering the Union League Golf Course in a quiet, upscale community in the town of Swainton, just 6 minutes to the lovely white beaches of Avalon and Stone Harbor. A...*

#### PROPERTY FEATURES

Exterior	OutsideFeatures	ParkingGarage	OtherRooms
Block	Patio	Garage	Dining Room
Concrete	Deck	3 Car	Kitchen
Shingle	Porch	Attached	Recreation/Family
Hardie Board	Sidewalks	Auto Door Opener	Eat-In-Kitchen
	Sprinkler System	Black Top Driveway	Pantry
			Laundry/Utility Room
			Storage Attic
			1st Floor Primary Bedroom
InteriorFeatures	AppliancesIncluded	Basement	Heating
Bar	Range	Crawl Space	Gas Natural
Fireplace- Gas	Oven	Outside Entrance	Forced Air
Wood Flooring	Self-Clean Oven		Multi-Zoned
Smoke/Fire Alarm	Microwave Oven		
Storage	Refrigerator		
Walk in Closet	Dishwasher		
Tile Flooring	Smoke/Fire Detector		
Kitchen Island	Wine Cooler		
	Stainless steel appliance		
Cooling	HotWater	Water	Sewer
Central Air Condition	Electric	Well	Septic
Multi Zoned	On Demand		

#### CONTACT

Ask for Theresa Maina  
Berger Realty Inc

Scan to see Property page.



Berger Realty, Inc.  
3160 Asbury Avenue  
Ocean City, NJ 08226  
1-877-237-4371 / 609-399-0076  
info@bergerrealty.com



18 Eagles, Cape May Court House, NJ, 08210

Price \$1,399,000.00



#### PROPERTY DETAILS

Total Rooms	10
Bedrooms	4
Baths Full	3
Baths Half	1
Year Built	2023
Type	Single Family
Block Number	12.01
Listing #	231719
Taxes	12935.00

#### COMMENTS

*Impressive, newly constructed home located in a cul-de-sac for privacy and convenience. The home, in the unique style of 'Modern Farmhouse' architecture, is situated on a large, beautifully landscaped lot bordering the Union League Golf Course in a quiet, upscale community in the town of Swainton, just 6 minutes to the lovely white beaches of Avalon and Stone Harbor. A...*

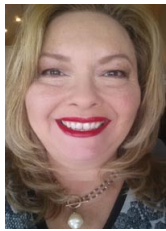
#### PROPERTY FEATURES

Exterior	OutsideFeatures	ParkingGarage	OtherRooms
Block	Patio	Garage	Dining Room
Concrete	Deck	3 Car	Kitchen
Shingle	Porch	Attached	Recreation/Family
Hardie Board	Sidewalks	Auto Door Opener	Eat-In-Kitchen
	Sprinkler System	Black Top Driveway	Pantry
			Laundry/Utility Room
			Storage Attic
			1st Floor Primary Bedroom
InteriorFeatures	AppliancesIncluded	Basement	Heating
Bar	Range	Crawl Space	Gas Natural
Fireplace- Gas	Oven	Outside Entrance	Forced Air
Wood Flooring	Self-Clean Oven		Multi-Zoned
Smoke/Fire Alarm	Microwave Oven		
Storage	Refrigerator		
Walk in Closet	Dishwasher		
Tile Flooring	Smoke/Fire Detector		
Kitchen Island	Wine Cooler		
	Stainless steel appliance		
Cooling	HotWater	Water	Sewer
Central Air Condition	Electric	Well	Septic
Multi Zoned	On Demand		

#### CONTACT

Ask for Theresa Maina  
Berger Realty Inc

Scan to see Property page.



**3160 Asbury Avenue, Ocean City**  
**Call: 609-703-7725**  
**Email to: [tam@bergerrealty.com](mailto:tam@bergerrealty.com)**



**3160 Asbury Avenue, Ocean City**  
**Call: 609-703-7725**  
**Email to: [tam@bergerrealty.com](mailto:tam@bergerrealty.com)**

