



8305 Landis, Unit 3, Sea Isle City, NJ, 08243

Price \$225,000.00

### PROPERTY DETAILS

<b>Total Rooms</b>	
<b>Bedrooms</b>	0
<b>Baths Full</b>	
<b>Baths Half</b>	
<b>Year Built</b>	1980
<b>Type</b>	Commercial/Industrial
<b>Block Number</b>	83.02
<b>Listing #</b>	231681
<b>Taxes</b>	1021.00

### COMMENTS

*Don't miss your chance to own this retail/office space in the heart of Townsend Inlet. Great location with tons of foot traffic. Near other retail, beach, restaurants, etc. The property contains two stories that could be separated, with offices on the second floor, including a full bathroom, and retail on the first floor....*

### PROPERTY FEATURES

Exterior	OtherRooms	InteriorFeatures	Heating
Wood/Frame	Office Space Avail	Restroom	Forced Air
	Retail Store	Storage	
	Shower Room(s)		
Cooling	Water	Sewer	
Central Air Conditioning	City	City	

### CONTACT



Ask for Colin Halliday  
Berger Realty Inc  
1670 Boardwalk, Ocean City  
Call: 609-335-6702  
Email to: [ceh@bergerrealty.com](mailto:ceh@bergerrealty.com)

Scan to see Property page.



8305 Landis, Unit 3, Sea Isle City, NJ, 08243

Price \$225,000.00

### PROPERTY DETAILS

<b>Total Rooms</b>	
<b>Bedrooms</b>	0
<b>Baths Full</b>	
<b>Baths Half</b>	
<b>Year Built</b>	1980
<b>Type</b>	Commercial/Industrial
<b>Block Number</b>	83.02
<b>Listing #</b>	231681
<b>Taxes</b>	1021.00

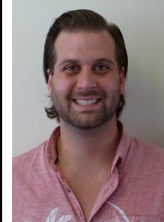
### COMMENTS

*Don't miss your chance to own this retail/office space in the heart of Townsend Inlet. Great location with tons of foot traffic. Near other retail, beach, restaurants, etc. The property contains two stories that could be separated, with offices on the second floor, including a full bathroom, and retail on the first floor....*

### PROPERTY FEATURES

Exterior	OtherRooms	InteriorFeatures	Heating
Wood/Frame	Office Space Avail	Restroom	Forced Air
	Retail Store	Storage	
	Shower Room(s)		
Cooling	Water	Sewer	
Central Air Conditioning	City	City	

### CONTACT



Ask for Colin Halliday  
Berger Realty Inc  
1670 Boardwalk, Ocean City  
Call: 609-335-6702  
Email to: [ceh@bergerrealty.com](mailto:ceh@bergerrealty.com)

Scan to see Property page.

