

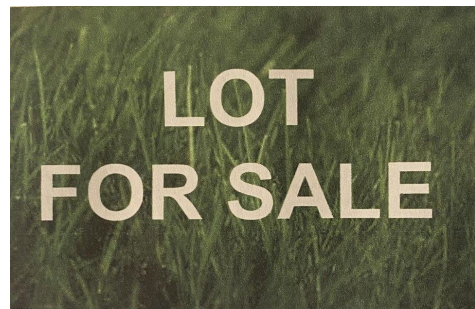


Berger Realty, Inc.
3160 Asbury Avenue
Ocean City, NJ 08226
1-877-237-4371 / 609-399-0076
info@bergerrealty.com



886 Weeks Landing, Erma, NJ, 08204

Price \$325,000.00



PROPERTY DETAILS

Total Rooms	
Bedrooms	0
Baths Full	0
Baths Half	0
Year Built	
Type	Residential Vacant Lot
Block Number	510
Listing #	230590
Taxes	3202.00

COMMENTS

Possible buildable lot in desirable neighborhood. Lot size is approximate 1.59 acre. Seller obtained letter from DEP when purchased and is included in Associated Docs along with subdivision plan with dimensions. All approvals or permits will be required to be performed by the buyer....

PROPERTY FEATURES

CONTACT



Ask for Sean McGinnis
Berger Realty Inc
3160 Asbury Avenue, Ocean City
Call: 609-703-9955
Email to: smc@bergerrealty.com

Scan to see Property page.

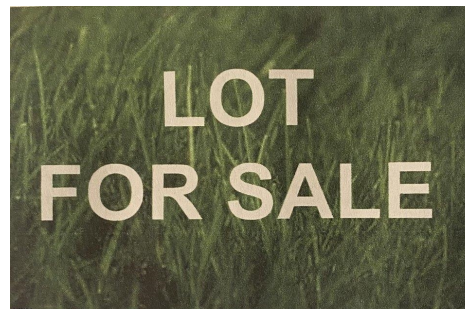


Berger Realty, Inc.
3160 Asbury Avenue
Ocean City, NJ 08226
1-877-237-4371 / 609-399-0076
info@bergerrealty.com



886 Weeks Landing, Erma, NJ, 08204

Price \$325,000.00



PROPERTY DETAILS

Total Rooms	
Bedrooms	0
Baths Full	0
Baths Half	0
Year Built	
Type	Residential Vacant Lot
Block Number	510
Listing #	230590
Taxes	3202.00

COMMENTS

Possible buildable lot in desirable neighborhood. Lot size is approximate 1.59 acre. Seller obtained letter from DEP when purchased and is included in Associated Docs along with subdivision plan with dimensions. All approvals or permits will be required to be performed by the buyer....

PROPERTY FEATURES

CONTACT



Ask for Sean McGinnis
Berger Realty Inc
3160 Asbury Avenue, Ocean City
Call: 609-703-9955
Email to: smc@bergerrealty.com

Scan to see Property page.

