

Berger Realty

Since 1926



Berger Realty, Inc.
3160 Asbury Avenue
Ocean City, NJ 08226
1-877-237-4371 / 609-399-0076
info@bergerrealty.com



705 Route 9, Lower Township, NJ, 08204

Price \$2,900,000.00

PROPERTY DETAILS



Total Rooms	
Bedrooms	0
Baths Full	0
Baths Half	0
Year Built	
Type	Commercial Vacant Lot
Block Number	510
Listing #	223046
Taxes	10958.00

COMMENTS

11.85 acres just a short distance to Cape May and the Wildwoods. Currently used as a solar field. This property once had approvals for approximately 48 three bedroom, two bath townhouses (see pictures and associated docs for plans). There are approximately six years left on the solar lease. At the termination of the lease in January 2028, the solar panels become property o...

PROPERTY FEATURES

CONTACT



Ask for Margarita Kobilianets
Berger Realty Inc
3160 Asbury Avenue, Ocean City
Call: 609-674-3417
Email to: mak@bergerrealty.com

Scan to see Property page.



Berger Realty

Since 1926



Berger Realty, Inc.
3160 Asbury Avenue
Ocean City, NJ 08226
1-877-237-4371 / 609-399-0076
info@bergerrealty.com



705 Route 9, Lower Township, NJ, 08204

Price \$2,900,000.00

PROPERTY DETAILS



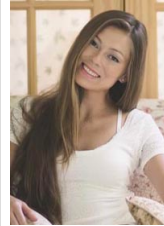
Total Rooms	
Bedrooms	0
Baths Full	0
Baths Half	0
Year Built	
Type	Commercial Vacant Lot
Block Number	510
Listing #	223046
Taxes	10958.00

COMMENTS

11.85 acres just a short distance to Cape May and the Wildwoods. Currently used as a solar field. This property once had approvals for approximately 48 three bedroom, two bath townhouses (see pictures and associated docs for plans). There are approximately six years left on the solar lease. At the termination of the lease in January 2028, the solar panels become property o...

PROPERTY FEATURES

CONTACT



Ask for Margarita Kobilianets
Berger Realty Inc
3160 Asbury Avenue, Ocean City
Call: 609-674-3417
Email to: mak@bergerrealty.com

Scan to see Property page.

