

# Berger Realty

Since 1926



Berger Realty, Inc.  
3160 Asbury Avenue  
Ocean City, NJ 08226  
1-877-237-4371 / 609-399-0076  
info@bergerrealty.com



705 Route 9, Lower Township, NJ, 08204

Price \$2,900,000.00

### PROPERTY DETAILS

|              |                       |
|--------------|-----------------------|
| Total Rooms  |                       |
| Bedrooms     | 0                     |
| Baths Full   |                       |
| Baths Half   |                       |
| Year Built   |                       |
| Type         | Commercial/Industrial |
| Block Number | 510                   |
| Listing #    | 223043                |
| Taxes        | 10958.00              |



These Lines are Approximations

### COMMENTS

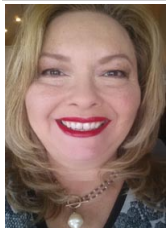
11.85 acres just a short distance to Cape May and the Wildwoods. Currently used as a solar field. This property once had approvals for approximately 48 three bedroom, two bath townhouses (see pictures and associated docs for plans). There are approximately six years left on the solar lease. At the termination of the lease in January 2028, the solar panels become property o...

### PROPERTY FEATURES

|                     |            |                     |       |
|---------------------|------------|---------------------|-------|
| OutsideFeatures     | Heating    | Cooling             | Water |
| Other (See Remarks) | No Heating | Other (See Remarks) | City  |

Sewer  
City

### CONTACT



Ask for Theresa Maina  
Berger Realty Inc  
3160 Asbury Avenue, Ocean City  
Call: 609-703-7725  
Email to: tam@bergerrealty.com

Scan to see Property page.



# Berger Realty

Since 1926



Berger Realty, Inc.  
3160 Asbury Avenue  
Ocean City, NJ 08226  
1-877-237-4371 / 609-399-0076  
info@bergerrealty.com



705 Route 9, Lower Township, NJ, 08204

Price \$2,900,000.00

### PROPERTY DETAILS

|              |                       |
|--------------|-----------------------|
| Total Rooms  |                       |
| Bedrooms     | 0                     |
| Baths Full   |                       |
| Baths Half   |                       |
| Year Built   |                       |
| Type         | Commercial/Industrial |
| Block Number | 510                   |
| Listing #    | 223043                |
| Taxes        | 10958.00              |



These Lines are Approximations

### COMMENTS

11.85 acres just a short distance to Cape May and the Wildwoods. Currently used as a solar field. This property once had approvals for approximately 48 three bedroom, two bath townhouses (see pictures and associated docs for plans). There are approximately six years left on the solar lease. At the termination of the lease in January 2028, the solar panels become property o...

### PROPERTY FEATURES

|                     |            |                     |       |
|---------------------|------------|---------------------|-------|
| OutsideFeatures     | Heating    | Cooling             | Water |
| Other (See Remarks) | No Heating | Other (See Remarks) | City  |

Sewer  
City

### CONTACT



Ask for Theresa Maina  
Berger Realty Inc  
3160 Asbury Avenue, Ocean City  
Call: 609-703-7725  
Email to: tam@bergerrealty.com

Scan to see Property page.

