

Berger Realty

Since 1926



Berger Realty, Inc.
3160 Asbury Avenue
Ocean City, NJ 08226
1-877-237-4371 / 609-399-0076
info@bergerrealty.com



South Holly, Galloway Township, NJ, 08205

Price \$310,000.00



PROPERTY DETAILS

Total Rooms	
Bedrooms	0
Baths Full	0
Baths Half	0
Year Built	
Type	Vacant Lot
Block Number	795
Listing #	221838
Taxes	2654.00

COMMENTS

Wonderful oversized building lot on the corner of South Holly and Coolidge Avenue. A desirable location with 141 front footage, curbs and paved streets. This is the last wooded building parcel in a well established development of newer single family homes. Build your dream home on a generous .57 Acres. Two lot Subdivision opportunity, buyer/builder to complete. Water/sewer...

PROPERTY FEATURES

CONTACT



Ask for Marki Lyn Warlow
Berger Realty Inc
3160 Asbury Avenue, Ocean City
Call:
Email to: mlw@bergerrealty.com

Scan to see Property page.



Berger Realty

Since 1926



Berger Realty, Inc.
3160 Asbury Avenue
Ocean City, NJ 08226
1-877-237-4371 / 609-399-0076
info@bergerrealty.com



South Holly, Galloway Township, NJ, 08205

Price \$310,000.00



PROPERTY DETAILS

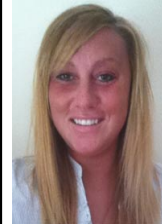
Total Rooms	
Bedrooms	0
Baths Full	0
Baths Half	0
Year Built	
Type	Vacant Lot
Block Number	795
Listing #	221838
Taxes	2654.00

COMMENTS

Wonderful oversized building lot on the corner of South Holly and Coolidge Avenue. A desirable location with 141 front footage, curbs and paved streets. This is the last wooded building parcel in a well established development of newer single family homes. Build your dream home on a generous .57 Acres. Two lot Subdivision opportunity, buyer/builder to complete. Water/sewer...

PROPERTY FEATURES

CONTACT



Ask for Marki Lyn Warlow
Berger Realty Inc
3160 Asbury Avenue, Ocean City
Call:
Email to: mlw@bergerrealty.com

Scan to see Property page.

