

# Berger Realty

Since 1928



Berger Realty, Inc.  
3160 Asbury Avenue  
Ocean City, NJ 08226  
1-877-237-4371 / 609-399-0076  
info@bergerrealty.com



South Holly, Galloway Township, NJ, 08205

Price \$310,000.00



### PROPERTY DETAILS

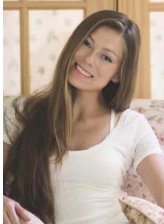
|              |            |
|--------------|------------|
| Total Rooms  |            |
| Bedrooms     | 0          |
| Baths Full   | 0          |
| Baths Half   | 0          |
| Year Built   |            |
| Type         | Vacant Lot |
| Block Number | 795        |
| Listing #    | 221838     |
| Taxes        | 2654.00    |

### COMMENTS

Wonderful oversized building lot on the corner of South Holly and Coolidge Avenue. A desirable location with 141 front footage, curbs and paved streets. This is the last wooded building parcel in a well established development of newer single family homes. Build your dream home on a generous .57 Acres. Two lot Subdivision opportunity, buyer/builder to complete. Water/sewer...

### PROPERTY FEATURES

### CONTACT



Ask for Margarita Kobilianets  
Berger Realty Inc  
3160 Asbury Avenue, Ocean City  
Call: 609-674-3417  
Email to: mak@bergerrealty.com

Scan to see Property page.



# Berger Realty

Since 1928

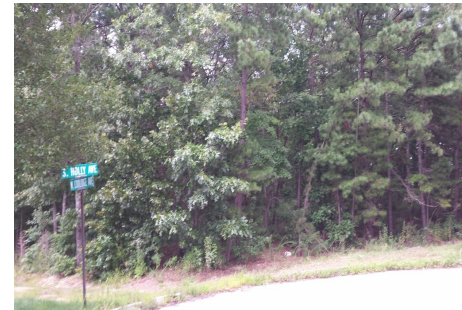


Berger Realty, Inc.  
3160 Asbury Avenue  
Ocean City, NJ 08226  
1-877-237-4371 / 609-399-0076  
info@bergerrealty.com



South Holly, Galloway Township, NJ, 08205

Price \$310,000.00



### PROPERTY DETAILS

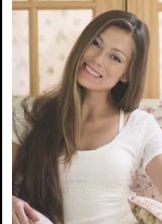
|              |            |
|--------------|------------|
| Total Rooms  |            |
| Bedrooms     | 0          |
| Baths Full   | 0          |
| Baths Half   | 0          |
| Year Built   |            |
| Type         | Vacant Lot |
| Block Number | 795        |
| Listing #    | 221838     |
| Taxes        | 2654.00    |

### COMMENTS

Wonderful oversized building lot on the corner of South Holly and Coolidge Avenue. A desirable location with 141 front footage, curbs and paved streets. This is the last wooded building parcel in a well established development of newer single family homes. Build your dream home on a generous .57 Acres. Two lot Subdivision opportunity, buyer/builder to complete. Water/sewer...

### PROPERTY FEATURES

### CONTACT



Ask for Margarita Kobilianets  
Berger Realty Inc  
3160 Asbury Avenue, Ocean City  
Call: 609-674-3417  
Email to: mak@bergerrealty.com

Scan to see Property page.

