

# Berger Realty

Since 1928



Berger Realty, Inc.  
3160 Asbury Avenue  
Ocean City, NJ 08226  
1-877-237-4371 / 609-399-0076  
info@bergerrealty.com



South Holly, Galloway Township, NJ, 08205

Price \$310,000.00



### PROPERTY DETAILS

Total Rooms	
Bedrooms	0
Baths Full	0
Baths Half	0
Year Built	
Type	Vacant Lot
Block Number	795
Listing #	221838
Taxes	2654.00

### COMMENTS

Wonderful oversized building lot on the corner of South Holly and Coolidge Avenue. A desirable location with 141 front footage, curbs and paved streets. This is the last wooded building parcel in a well established development of newer single family homes. Build your dream home on a generous .57 Acres. Two lot Subdivision opportunity, buyer/builder to complete. Water/sewer...

### PROPERTY FEATURES

### CONTACT



Ask for Evelyn "Evie" Schweibinz  
Berger Realty Inc  
3160 Asbury Avenue, Ocean City  
Call:  
Email to: [ems@bergerrealty.com](mailto:ems@bergerrealty.com)

Scan to see Property page.



# Berger Realty

Since 1928



Berger Realty, Inc.  
3160 Asbury Avenue  
Ocean City, NJ 08226  
1-877-237-4371 / 609-399-0076  
info@bergerrealty.com



South Holly, Galloway Township, NJ, 08205

Price \$310,000.00



### PROPERTY DETAILS

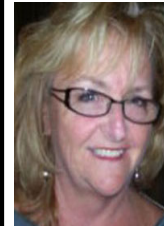
Total Rooms	
Bedrooms	0
Baths Full	0
Baths Half	0
Year Built	
Type	Vacant Lot
Block Number	795
Listing #	221838
Taxes	2654.00

### COMMENTS

Wonderful oversized building lot on the corner of South Holly and Coolidge Avenue. A desirable location with 141 front footage, curbs and paved streets. This is the last wooded building parcel in a well established development of newer single family homes. Build your dream home on a generous .57 Acres. Two lot Subdivision opportunity, buyer/builder to complete. Water/sewer...

### PROPERTY FEATURES

### CONTACT



Ask for Evelyn "Evie" Schweibinz  
Berger Realty Inc  
3160 Asbury Avenue, Ocean City  
Call:  
Email to: [ems@bergerrealty.com](mailto:ems@bergerrealty.com)

Scan to see Property page.

