

# Berger Realty

Since 1928

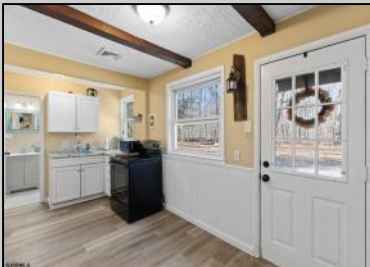


Berger Realty, Inc.  
3160 Asbury Avenue  
Ocean City, NJ 08226  
1-877-237-4371 / 609-399-0076  
info@bergerrealty.com



**1318 Mt Vernon  
Mays Landing, NJ 08330**

**Asking \$225,000.00**



SJSRMLS

## COMMENTS

Discover the perfect blend of peaceful seclusion and convenient accessibility in this delightful 2-bedroom bungalow. Nestled within a tranquil woodland setting, this home offers a serene retreat from the hustle and bustle of everyday life. Immerse yourself in nature's embrace. Wake up to the sounds of birdsong and enjoy the calming views of the surrounding woods. Enjoy a sense of exclusivity and privacy with the extended driveway, ensuring your home remains a peaceful hidden gem. Step inside and feel the warm, inviting atmosphere. The bungalow's quaint design creates a perfect space for relaxation and unwinding. Unleash your creativity! This home offers ample opportunities for customization, allowing you to tailor it to your unique tastes and needs. Experience the best of both worlds. While enjoying the privacy of a woodland setting, you'll be conveniently located between several bustling areas, providing easy access to urban amenities. This "quant" bungalow, despite its cozy footprint, boasts a "big feeling" thanks to its connection with nature and potential for expansion of personal style. Imagine creating your own private oasis, a place where you can truly escape and recharge. Don't miss this opportunity to make this charming woodland retreat your own.

## PROPERTY DETAILS

Exterior Vinyl	ParkingGarage None	Basement Slab	Heating Forced Air Gas-Propane
HotWater Electric	Water Private	Sewer Private	



Ask for Ken Sedberry  
Berger Realty Inc  
3160 Asbury Avenue, Ocean City  
Call: 609-399-0076  
Email to: kas@bergerrealty.com

