



5467 Harding Hwy
 Mays Landing, NJ 08330

Asking \$400,000.00

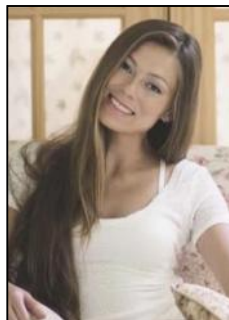


COMMENTS

Welcome to Mays Landing, NJ! Charming Dutch Colonial on Prime Highway Location – Endless Possibilities! Come tour this classic brick Dutch Colonial, perfectly positioned on over one acre of land along high-visibility US Highway Route 40 at the gateway to Mays Landing, NJ. Steeped in character and history, this stately property served as a successful real estate office for over 30 years, offering both charm and functionality in a prime commercial location. The expansive lot provides ample room for parking, a picturesque setting for professional offices, retail, or potential live/work opportunities (subject to zoning). With its timeless curb appeal, generous frontage, and unbeatable location, this property is an exceptional opportunity for investors, business owners, or those looking to restore a piece of local history. Whether you're expanding your business presence or envisioning a fresh start, this well-known landmark is ready for its next chapter.

PROPERTY DETAILS

Exterior Brick	OutsideFeatures Sign	ParkingGarage 6 to 10 Spaces Off Street Other (See Remarks) Paved	InteriorFeatures 220 Volt Electricity Display Windows Restroom Security System Smoke/Fire Alarm Storage
	Heating Gas Multi-Zoned	Cooling Central Air Conditioning Multi-Zoned	HotWater Gas



Asst. Broker Margarita Kobal
 Berger Realty Inc
 3160 Asbury Avenue, Ocean City
 Call: 609-399-0076
 Email to: mak@bergerrealty.com

