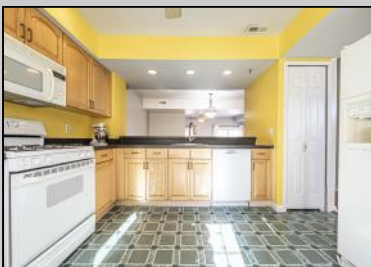




695 Lake Front Cir
 Galloway Township, NJ 08205

Asking \$295,000.00



COMMENTS

SMITHVILLE NEW LISTING ALERT!!! This 3 bedrooms, 2.5 bathrooms end unit overlooking Lake Victoria fulfills your desire for privacy & serenity. The main level showcases a seamless layout - starting with an inviting foyer, that opens into your functional kitchen with eat-in area, offering ample cabinet storage and appliances. The bright dining room with recessed lighting and storage, flows effortlessly into a spacious living area featuring a fireplace and views of the private patio facing the lake. Upstairs you will find a wonderful master suite w/ walk-in closet and cathedral ceilings. Two additional bedrooms and full bathroom are also on the second floor. A dedicated laundry area, equipped with a washer and dryer, and 1-car detached garage adds to the home's functionality. Close to transportation, Smithville Village, and shops. Don't miss the opportunity to own this spacious, end-unit townhouse in a prime location!

PROPERTY DETAILS

Exterior Vinyl	ParkingGarage Detached Garage One Car	OtherRooms Dining Room Eat In Kitchen Laundry/Utility Room Storage Attic	InteriorFeatures Cathedral Ceiling(s) Fireplace(s) Pets Allowed Wall to Wall Carpet
Heating Forced Air	Cooling Attic Fan Ceiling Fan(s)	HotWater Gas	Water Public Water



Call for Brandon Howell

Berger Realty Inc
 3160 Asbury Avenue, Ocean City
 Call: 609-399-0076
 Email to: bah@bergerrealty.com

