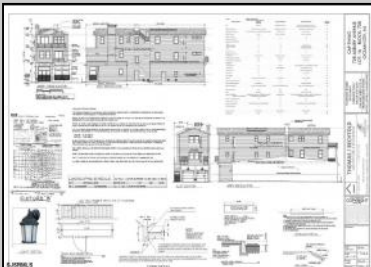
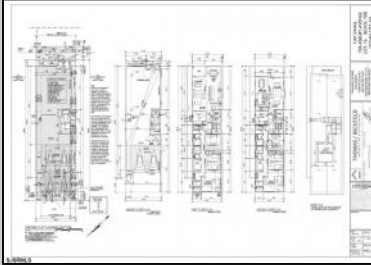




728 Asbury
Ocean City, NJ 08226

Asking \$1,150,000.00



CAP SWAG
728 ASBURY AVENUE

U.S.G.S. MAP
ZONING MAP
TAX MAP
AERIAL MAP
ASBURY AVENUE ELEVATION
EXISTING CONDITIONS

PLAN OF SURVEY
LOT 16 - BLOCK 708 - PLATS 10
728 ASBURY AVENUE
OCEAN CITY, NJ 08226
FREEDOM TITLE & ABSTRACT CO.
1000 W. MARKET STREET, SUITE 200
OCEAN CITY, NJ 08226

THOMAS / BECHTOLD
REGISTERED PROFESSIONAL ARCHITECT
1000 W. MARKET STREET, SUITE 200
OCEAN CITY, NJ 08226

CONTRACTOR
MCCONNARVILLE
1000 W. MARKET STREET, SUITE 200
OCEAN CITY, NJ 08226

ENGINEER
MCCONNARVILLE
1000 W. MARKET STREET, SUITE 200
OCEAN CITY, NJ 08226

LANDSCAPE ARCHITECT
MCCONNARVILLE
1000 W. MARKET STREET, SUITE 200
OCEAN CITY, NJ 08226

PLANNING BOARD
728 ASBURY AVENUE
LOT 16 - BLOCK 708
OCEAN CITY, NJ

SIGNATURES
PLANNING BOARD MEMBER
VENDOR MEMBER
BOARD MEMBER

DATE: 11/11/14
SCALE: AS SHOWN
PROJECT: 728 ASBURY AVENUE
SHEET: 1 OF 1

17304
PB-1

S.JSRMLS

COMMENTS

PRIME MIXED-USE DEVELOPMENT OPPORTUNITY ON ASBURY AVE! This rare mixed-use property offers a blank canvas for your vision in the heart of Ocean City's bustling Asbury Ave. This project comes shovel ready. With city-approved plans in hand, this property is set for transformation into a dynamic space featuring: - Two residential living units, ideal for vacationers or year-round residents (1800sq ft and 1700sq ft) -Ground level commercial space. perfect for retail or restaurant (1600sq ft) -Shared rooftop deck. Offering expansive views and a unique outdoor amenity for residents and tenants. -Plans include city approved architectural plan.

PROPERTY DETAILS

OutsideFeatures	ParkingGarage	Heating	Cooling
Deck	Two Car	Forced Air	Central
Sidewalks		Gas-Natural	
HotWater	Water	Sewer	
Gas	Public	Public Sewer	



Ask for Sheilah Baran
Berger Realty Inc
1330 Bay Avenue, Ocean City
Call: 609-391-1330
Email to: sdb@bergerrealty.com

