

Berger Realty

Since 1928



Berger Realty, Inc.
3160 Asbury Avenue
Ocean City, NJ 08226
1-877-237-4371 / 609-399-0076
info@bergerrealty.com

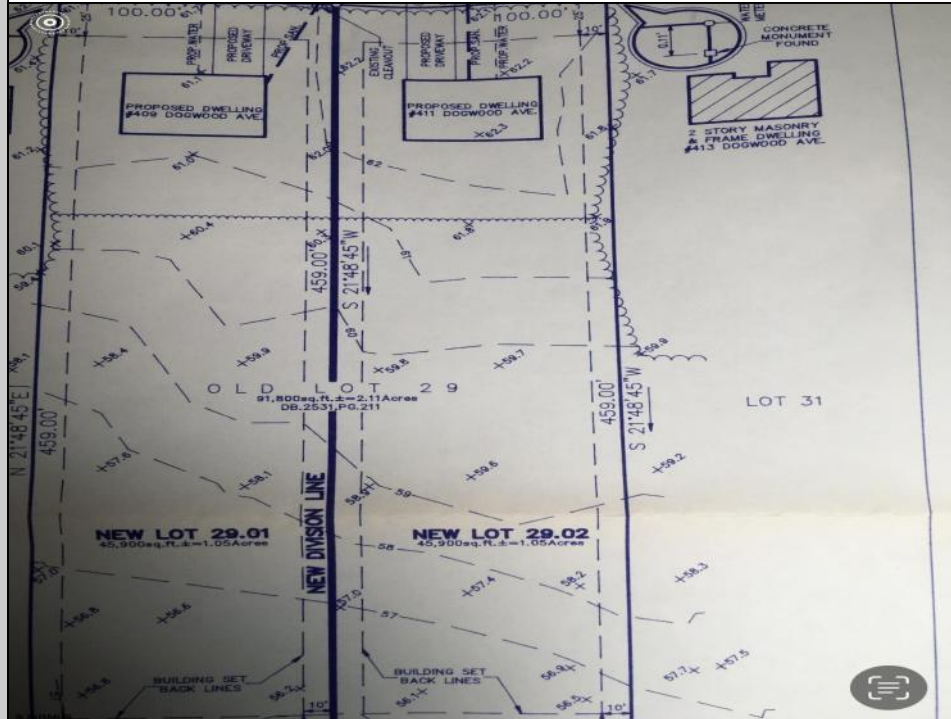


Property Map



411 DOGWOOD
Egg Harbor Township, NJ 08234

Asking \$150,000.00



COMMENTS

Build your new home on a Dogwood ave in Egg Harbor Township. One vacant lot left; in a size of 1,04 acres; with dimensions 94 x 482. All utilities on the street, zoned residential, buildable lot for a single family home Top location for a family oriented neighborhood. Located with walking distance to the enormous and beautiful Tony Canale Park, walking distance to the 7 mile bike path, close to shopping and restaurants, quick exp. way acces; about 20 min to the beach and boardwalk. Surrounded by a beautiful homes.

PROPERTY DETAILS



Ask for Veronica "Ronni" Vetro
Berger Realty Inc
3160 Asbury Avenue, Ocean City
Call: 609-399-0076
Email to: vrv@bergerrealty.com

