

# Berger Realty

Since 1928



Berger Realty, Inc.  
3160 Asbury Avenue  
Ocean City, NJ 08226  
1-877-237-4371 / 609-399-0076  
info@bergerrealty.com

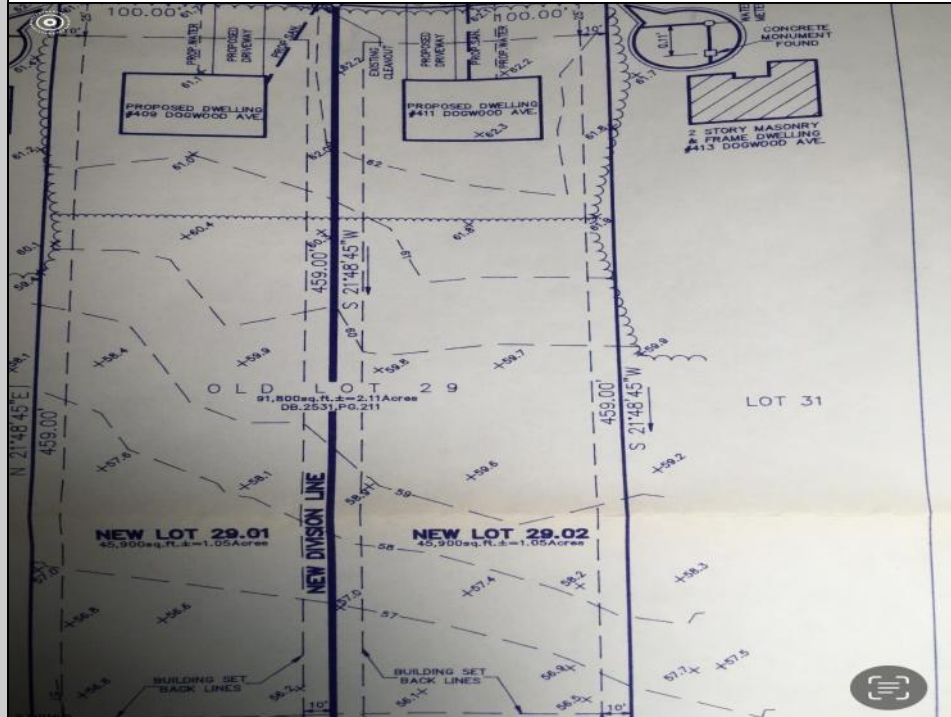


Property Map



**411 DOGWOOD**  
Egg Harbor Township, NJ 08234

Asking \$150,000.00



### COMMENTS

Build your new home on a Dogwood ave in Egg Harbor Township. One vacant lot left; in a size of 1,04 acres; with dimensions 94 x 482. All utilities on the street, zoned residential, buildable lot for a single family home Top location for a family oriented neighborhood. Located with walking distance to the enormous and beautiful Tony Canale Park, walking distance to the 7 mile bike path, close to shopping and restaurants, quick exp. way acces; about 20 min to the beach and boardwalk. Surrounded by a beautiful homes.

### PROPERTY DETAILS



Ask for Graham Ginn  
Berger Realty Inc  
3160 Asbury Avenue, Ocean City  
Call: 609-399-0076  
Email to: gmg@bergerrealty.com  
https://www.ocnj.com

