



**337 Clarkstown
Mays Landing, NJ 08330**

Asking \$1,695,000.00



COMMENTS

Luxury RIVERFRONT Estate, wake up to stunning panoramic views of the Great Egg Harbor River and end your day with breathtaking sunsets from your custom-designed home in Mays Landing, NJ. Set on over 6 acres, this remarkable riverfront estate offers an idyllic setting for both water lovers and equestrian aficionados. The open floor plan features soaring 12-foot ceilings and expansive doorways, creating a seamless flow of elegance and comfort. The living and dining areas, with vaulted ceilings, frame incredible river views that bring nature's beauty inside. The primary suite is a true retreat, complete with a dual-sided fireplace, private sitting area, two walk-in closets, and an ensuite bath with sweeping water views. Additional bedrooms with en-suites, and a separate guest suite above the garage offers ultimate privacy. With direct access to the river, enjoy convenient launch points for kayaks, paddle boards, or simply exploring the waters. The bay and ocean are just moments away, making this Waterfront Living at its finest. For those with a passion for horses, this estate features state-of-the-art facilities, including eleven stalls, a riding arena, paddocks, and a heated and air-conditioned barn with a two-bedroom apartment for staff or guests. Perfect for both competitive riding and leisurely trails. Outdoors, enjoy wrap-around porches and expansive patios with picturesque River Views. The property also includes a studio/workshop with commercial-grade doors and HVAC, a charming chicken coop, and ample space for recreation. Situated on the widest part of the river, this estate offers privacy and unparalleled access to amazing equestrian and waterfront amenities. Don't miss your chance to experience the best of both worlds – schedule your private tour today! All lots are deeded and taxed separately. Lot 31, Block 983 is 1.78 acres Consists of 5800 sq. ft. Main House, and a 1200 sq. ft. Studio / Workshop Lot 26, Block 983 - .83 acres - land is all cleared and fenced with a water view Lot 29, Block 983 - 3.03 acres includes the 8000 sq. ft. Barn with 11 stalls, heated and AC office and tac room; in addition, 2400 sq. ft. 2nd Fl. 2 bedroom 1 bath apartment fully heated and air conditioned. Lot 56.01, Block 981 - .71 acres - Riverfront with water access

PROPERTY DETAILS

Exterior	OutsideFeatures	ParkingGarage	OtherRooms
See Remarks	Deck	Attached Garage	Breakfast Nook
	Farm		Dining Room
	Fenced Yard		Great Room
	Horse Farm		In-Law Quarters
	Kennels/Stables		Laundry/Utility Room
	Patio		Pantry
	Porch		Storage Attic
	Sprinkler System		Workshop

Berger Realty

• Since 1928 •



Berger Realty, Inc.
3160 Asbury Avenue
Ocean City, NJ 08226
1-877-237-4371 / 609-399-0076
✉ info@bergerrealty.com



InteriorFeatures
Cathedral Ceiling
Security System
Walk In Closet

AppliancesIncluded
Dishwasher
Disposal
Dryer
Gas Stove
Microwave
Refrigerator
Washer

AlsoIncluded
Blinds
Curtains

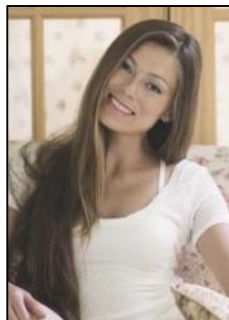
Heating
Gas-Natural

Cooling
Multi-Zoned

HotWater
Gas
Tankless-gas

Water
Private

Sewer
Private



Ask for Margarita Kobilianets
Berger Realty Inc
3160 Asbury Avenue, Ocean City
Call: 609-399-0076
Email to: mak@bergerrealty.com

