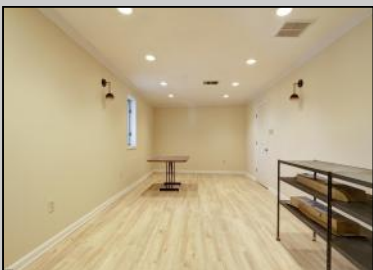
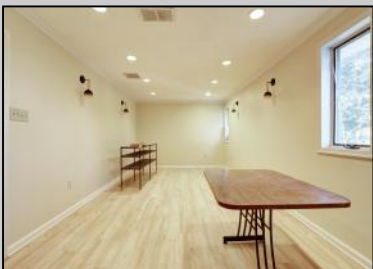




**48 Ansley
 Pleasantville, NJ 08232**

Asking \$329,900.00



COMMENTS

HURRY! This 4,000 Sq. Ft. office building is a perfect location for a law firm, accountants, engineers, doctors, health care, chiropractor, etc. The 1st floor has 7 exam rooms, 2 bathrooms, lobby/ waiting area, 4-5 offices, a reception area, lots of storage, and 6-10 parking spaces in the back of the building. There is also plenty of parking in front of the building. The 2nd floor has 3 large offices, kitchen, conference room, bathroom and 2 storage areas. The building is massive and has multiple uses as mentioned above. It's conveniently located with quick access to Atlantic City and the mainland. If you or anyone you know is looking for great space and an affordable building, call NOW to schedule your private showing.

PROPERTY DETAILS

Exterior Frame/Wood	OutsideFeatures Sign	ParkingGarage 6 to 10 Spaces Off Street Paved	InteriorFeatures Handicap Features Restroom Security System Smoke/Fire Alarm Storage
Basement Crawl Space	Heating Gas-Natural	Cooling Central Multi-Zoned	HotWater Gas



Ask for Barbara Fasy
 Seller
 Public Broker
 Berger Realty Inc
 1330 Bay Avenue, Ocean City
 Call: 609-391-1330
 Email to: bf@bergerrealty.com

