

Berger Realty

Since 1928



Berger Realty, Inc.
3160 Asbury Avenue
Ocean City, NJ 08226
1-877-237-4371 / 609-399-0076
info@bergerrealty.com



281 Heather Croft
Egg Harbor Township, NJ 08234

Asking \$180,000.00



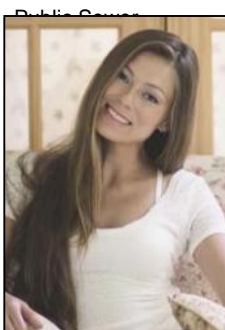
COMMENTS

A first-time home buyer, an investor, or anyone who enjoys living in a calm and serene environment would find this two-bedroom, one-bathroom condo to be the perfect asset. The property faces the forest and is situated in an isolated part of the complex. New laminate floors, newly installed interior doors, and a freshly painted space. The facility's plumbing is brand-new. Only on this side of Heather Croft are there plenty of parking spaces. Don't overlook this affordable apartment in the desirable Heather Croft Condominium! Emotional support dogs are allowed only with proper permits.

PROPERTY DETAILS

Exterior Vinyl	ParkingGarage None	OtherRooms Den/TV Room Eat In Kitchen Laundry/Utility Room	InteriorFeatures Fireplace(s)
Heating Forced Air Gas-Natural	Cooling Central Electric	HotWater Electric	Water Public Water

Sewer



Ask for Margarita Kobilianets
Berger Realty Inc
3160 Asbury Avenue, Ocean City
Call: 609-399-0076
Email to: mak@bergerrealty.com

