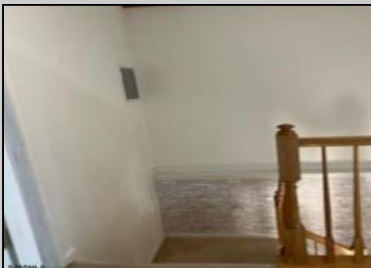




136 Pine Knoll Cir  
Mays Landing, NJ 08330

Asking \$314,900.00



### COMMENTS

Beautiful Victoria Crossing 3 bedroom, 2.5 bathrooms townhouse in move in condition!...3/4" hardwood floors, plush carpets, porcelain tiled floor in main bath, and lighting throughout. Gorgeous size master bedroom and bath. The property is in move-in condition.

### PROPERTY DETAILS

Exterior	OutsideFeatures	ParkingGarage	OtherRooms
Vinyl	Pool-In Ground	None	Breakfast Nook Dining Area Eat In Kitchen Laundry/Utility Room

InteriorFeatures	AppliancesIncluded	Basement	Heating
Carbon Monoxide Detector	Dishwasher Disposal Dryer Electric Stove Refrigerator Washer	Full Inside Entrance	Gas-Natural

HotWater	Water	Sewer
Gas	Public	Public Sewer



Ask for Troy Eggie  
Berger Realty Inc  
1670 Boardwalk, Ocean City  
Call: 609-391-0500  
Email to: tde@bergerrealty.com

