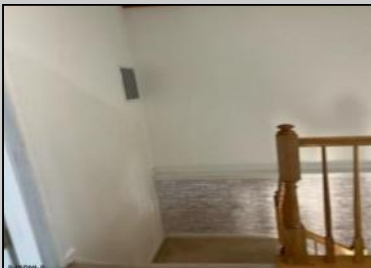




136 Pine Knoll Cir
Mays Landing, NJ 08330

Asking \$314,900.00



COMMENTS

Beautiful Victoria Crossing 3 bedroom, 2.5 bathrooms townhouse in move in condition!...3/4" hardwood floors, plush carpets, porcelain tiled floor in main bath, and lighting throughout. Gorgeous size master bedroom and bath. The property is in move-in condition.

PROPERTY DETAILS

Exterior	OutsideFeatures	ParkingGarage	OtherRooms
Vinyl	Pool-In Ground	None	Breakfast Nook Dining Area Eat In Kitchen Laundry/Utility Room
InteriorFeatures	AppliancesIncluded	Basement	Heating
Carbon Monoxide Detector Storage Walk In Closet	Disposal Dishwasher Dryer Electric Stove Refrigerator Washer	Full Inside Entrance	Gas-Natural
Cooling	HotWater	Water	Sewer
	Gas	Public	Public Sewer



Ask for Lori McCloskey
Berger Realty Inc
109 E 55th St., Ocean City
Call: 609-399-4211
Email to: lam@bergerrealty.com

