

Berger Realty

Since 1928

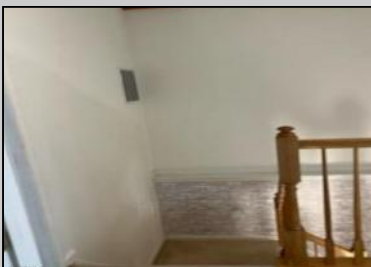


Berger Realty, Inc.
3160 Asbury Avenue
Ocean City, NJ 08226
1-877-237-4371 / 609-399-0076
info@bergerrealty.com



136 Pine Knoll Cir
Mays Landing, NJ 08330

Asking \$314,900.00



COMMENTS

Beautiful Victoria Crossing 3 bedroom, 2.5 bathrooms townhouse in move in condition!...3/4" hardwood floors, plush carpets, porcelain tiled floor in main bath, and lighting throughout. Gorgeous size master bedroom and bath. The property is in move-in condition.

PROPERTY DETAILS

Exterior Vinyl	OutsideFeatures Pool-In Ground	ParkingGarage None	OtherRooms Breakfast Nook Dining Area Eat In Kitchen Laundry/Utility Room
-------------------	-----------------------------------	-----------------------	---

InteriorFeatures Carbon Monoxide Detector Storage Walk In Closet	AppliancesIncluded Dishwasher Disposal Dryer Electric Stove Refrigerator Washer	Basement Full Inside Entrance	Heating Gas-Natural
--	---	-------------------------------------	------------------------

Cooling Gas	HotWater Gas	Water Public	Sewer Public Sewer
----------------	-----------------	-----------------	-----------------------



Ask for Dawn Warren
Berger Realty Inc
3160 Asbury Avenue, Ocean City
Call: 609-399-0076
Email to: dew@bergerrealty.com

