

Berger Realty

Since 1928

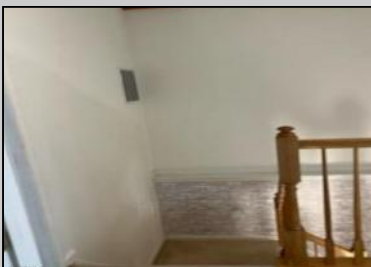


Berger Realty, Inc.
3160 Asbury Avenue
Ocean City, NJ 08226
1-877-237-4371 / 609-399-0076
info@bergerrealty.com



136 Pine Knoll Cir
Mays Landing, NJ 08330

Asking \$314,900.00



COMMENTS

Beautiful Victoria Crossing 3 bedroom, 2.5 bathrooms townhouse in move in condition!...3/4" hardwood floors, plush carpets, porcelain tiled floor in main bath, and lighting throughout. Gorgeous size master bedroom and bath. The property is in move-in condition.

PROPERTY DETAILS

Exterior	OutsideFeatures	ParkingGarage	OtherRooms
Vinyl	Pool-In Ground	None	Breakfast Nook
			Dining Area
			Eat In Kitchen
			Laundry/Utility Room

InteriorFeatures	AppliancesIncluded	Basement	Heating
Carbon Monoxide	Dishwasher	Full	Gas-Natural
Detector	Disposal	Inside Entrance	
Storage	Dryer		
Walk In Closet	Electric Stove		
	Refrigerator		
	Washer		

Cooling	HotWater	Water	Sewer
	Gas	Public	Public Sewer



Ask for Cory Raab
Berger Realty Inc
3160 Asbury Avenue, Ocean City
Call: 609-399-0076
Email to: cmr@bergerrealty.com

