

# Berger Realty

Since 1928

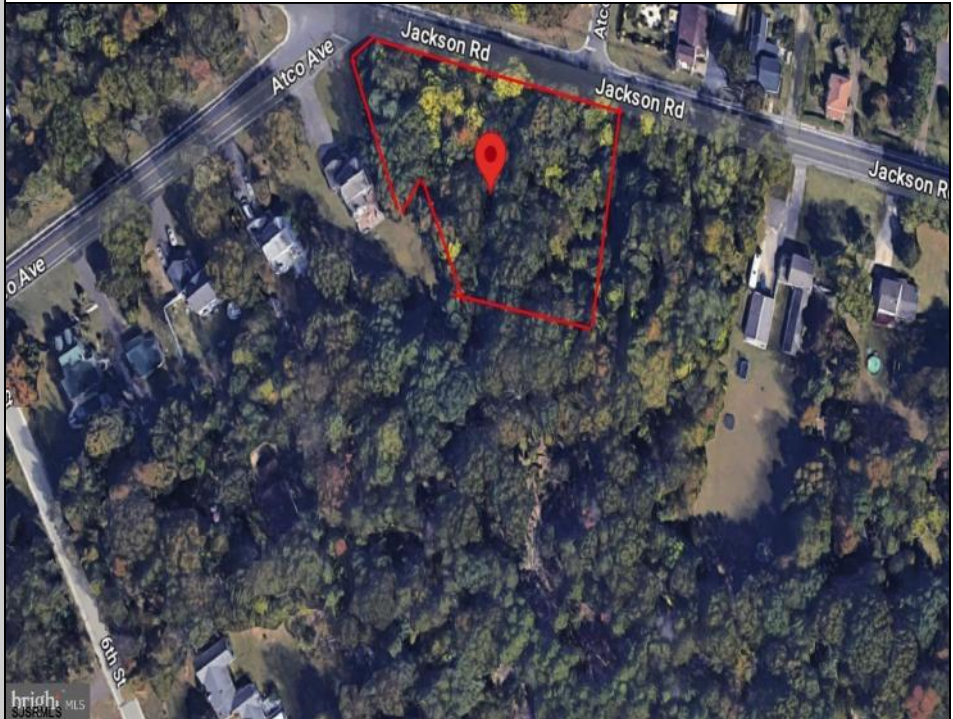


Berger Realty, Inc.  
3160 Asbury Avenue  
Ocean City, NJ 08226  
1-877-237-4371 / 609-399-0076  
info@bergerrealty.com



525-535-539 Jackson  
Waterford Works, NJ 08009

Asking \$175,000.00



## COMMENTS

CALLING ALL BUILDERS/INVESTORS! 3 Parcels zoned as Neighborhood Business District being sold together in the heart of Waterford Twp's own Atco Ave Business Community. See attached document for list of uses. Totalling about 2.5 acres of land, these lots are located on the corner of Atco Ave and Jackson Rd just a 3-minute drive away from Rt 73. These Mixed-Use lots sit among both residential homes and local businesses providing a steady flow of exposure to any new business! Buyer responsible for all Due Diligence. Annual Tax amount is for all 3 parcels combined.

## PROPERTY DETAILS



Ask for Evelyn "Evie" Schweibinz  
Berger Realty Inc  
3160 Asbury Avenue, Ocean City  
Call: 609-399-0076  
Email to: ems@bergerrealty.com

