



6056 Harding
Mays Landing, NJ 08330

Asking \$275,000.00

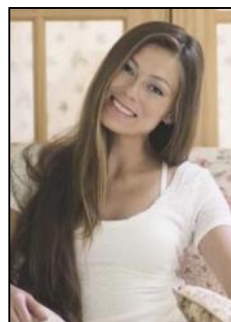


COMMENTS

Here is your opportunity to own a piece of Mays Landing history- Johnnie's Restaurant! An amazing family-owned breakfast/lunch spot serving our town since 1986! Key features: *Turnkey Operation*- Fully equipped kitchen, seating area, and everything needed to continue operations seamlessly. *Strong Community Presence*- Decades of goodwill, repeat customers and word of mouth referrals. *Prime Location*- Excellent highway exposure on Route 50 in a busy shopping center. *1,300+ SqFt Rented Space*- Well maintained and efficiently laid out for optimal service. *Long-Term Lease*- Secure lease in place until 2027. Don't miss this rare opportunity to step into a thriving, long-established restaurant with room for continued growth! Come and check it out today!

PROPERTY DETAILS

InteriorFeatures
Display Windows
Fire Sprinkler System
Handicap Features
Restroom
Smoke/Fire Alarm
Storage



Ask for Margarita Kobilianets
Berger Realty Inc
3160 Asbury Avenue, Ocean City
Call: 609-399-0076
Email to: mak@bergerrealty.com

