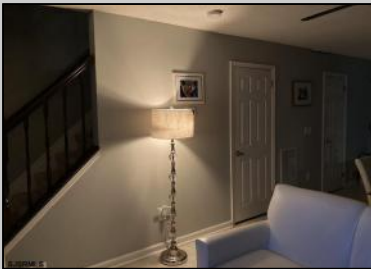




43 Mohave Dr  
Galloway Township, NJ 08205

Asking \$237,900.00



### COMMENTS

Discover this beautiful and meticulously maintained 2-bedroom townhouse, offering comfort, convenience, and modern updates. This charming home features a brand-new heating and cooling system, ensuring year-round efficiency and comfort. Ideally located near Stockton State College, Historic Town of Smithville, Atlantic City Expressway and the Garden State Parkway, this property provides easy access to both Atlantic City, Philadelphia and Delaware, making commuting a breeze. This property is also located near the New Jersey Transit train, located in the nearby Absecon area, with free parking 24 Hours a day. This train connects to Philadelphia 30th street station along with multiple stops on the way, perfect for not only employment transpiration, but also for recreational activities from Philadelphia to New York City. Enjoy this wonderful community's amenities, including a welcoming clubhouse with a spacious gathering room and a refreshing pool perfect for relaxing on hot summer days. Don't miss this incredible opportunity priced to sell and ready for its next owner!

### PROPERTY DETAILS

Exterior Brick Face	ParkingGarage None	OtherRooms Eat In Kitchen	Heating Forced Air Gas-Natural
Cooling Central	HotWater Gas	Water Public Water	Sewer Public Sewer



Ask for Lori McCloskey  
Berger Realty Inc  
109 E 55th St., Ocean City  
Call: 609-399-4211  
Email to: lam@bergerrealty.com

