

Berger Realty

Since 1928



Berger Realty, Inc.
3160 Asbury Avenue
Ocean City, NJ 08226
1-877-237-4371 / 609-399-0076
info@bergerrealty.com



417 Madison
Woodbine Borough, NJ 08270

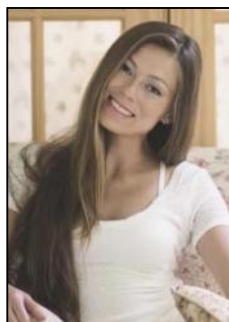
Asking \$395,000.00



COMMENTS

INVESTMENT SALE - REAL ESTATE ONLY. 3 existing tenanted buildings. Total area approximately 8,400+/- sf. Long time tenant with a 5 year lease option. Fully improved on 0.63+/- acres. 175+/- feet of street frontage. Ample parking on site. Building for production ad storage with a drive in loading door. Near Sea Isle ice production facility. Rte. 550 connects directly to Rte. 9 servicing Cape May County and Shore Points. Business is NOT for sale.

PROPERTY DETAILS



Ask for Margarita Kobilianets
Berger Realty Inc
3160 Asbury Avenue, Ocean City
Call: 609-399-0076
Email to: mak@bergerrealty.com

