

# Berger Realty

Since 1928

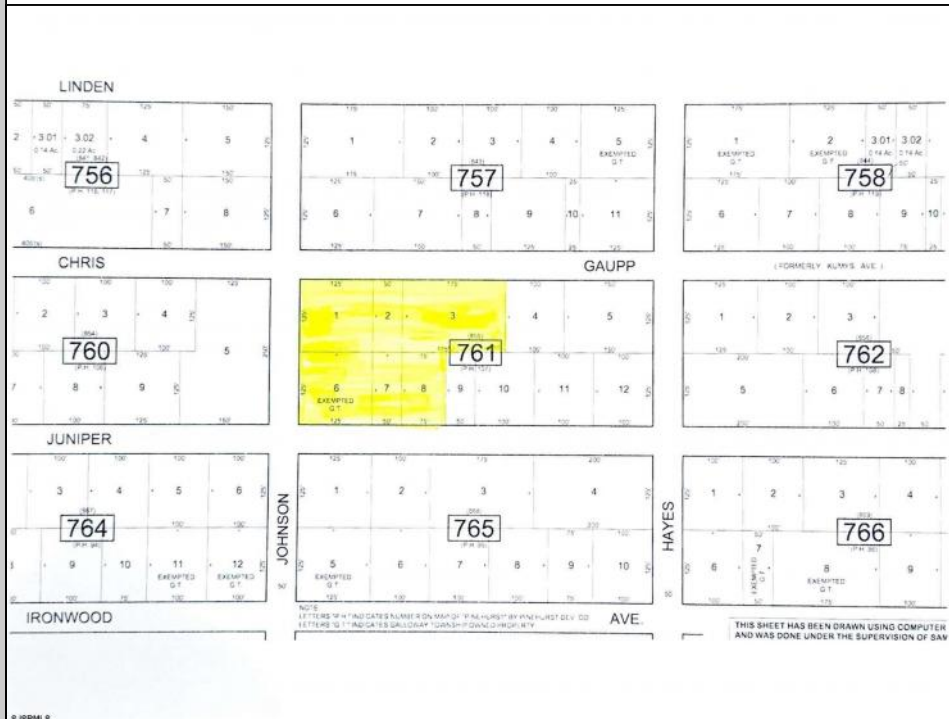


**Berger Realty, Inc**  
1330 Bay Avenue  
Ocean City, NJ 08226  
609-391-1330/609-391-1300  
[info@bergerrealty.com](mailto:info@bergerrealty.com)



**Chris Gaupp**  
Galloway Township, NJ 08205

**Asking \$499,000.00**



## COMMENTS

Lowest price buildable parcel on Chris Gaupp Rd, 350 feet of frontage, 1.7 acres of high and dry land with no wetlands or wetlands buffers, adjacent property was for sale if you need additional property, situated near Stockton College, Atlantic Regional Medical Centre and Bacharach Institute for Rehabilitation, Atlanticare. Excellent access to Rt 30, Garden State Parkway, Atlantic City Expressway, Atlantic City Airport and Aviation Park. See allowable uses below and setbacks in associated docs. Planned office facilities Additional uses. General sales and related service uses. Personal service and custom craft uses. Food product uses. Food and beverage service uses. Plants, animals and related uses. Financial uses. Office and professional uses. Business service uses. Medical and related uses. Transportation and related uses. Educational uses. Cultural, recreational and entertainment uses. Funeral homes.

## PROPERTY DETAILS



Ask for Phillip Bellucci  
Berger Realty Inc  
1330 Bay Avenue, Ocean City  
Call: 609-391-1330  
Email to: [pjb@bergerrealty.com](mailto:pjb@bergerrealty.com)

