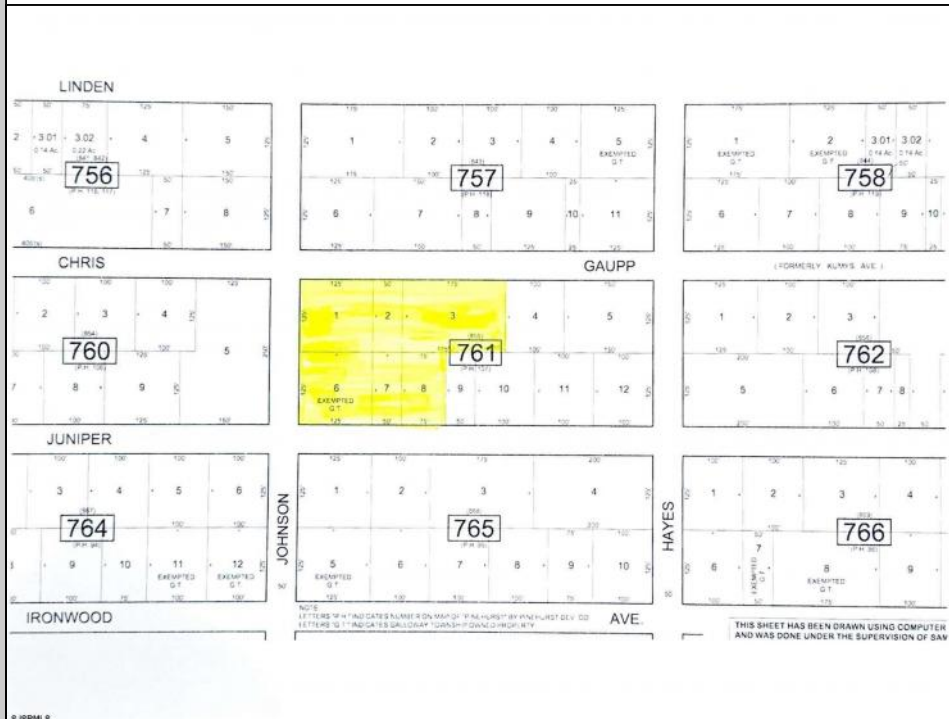




Chris Gaupp
Galloway Township, NJ 08205

Asking \$499,000.00



8/28/2018

COMMENTS

Lowest price buildable parcel on Chris Gaupp Rd, 350 feet of frontage, 1.7 acres of high and dry land with no wetlands or wetlands buffers, adjacent property was for sale if you need additional property, situated near Stockton College, Atlantic Regional Medical Centre and Bacharach Institute for Rehabilitation, Atlanticare. Excellent access to Rt 30, Garden State Parkway, Atlantic City Expressway, Atlantic City Airport and Aviation Park. See allowable uses below and setbacks in associated docs. Planned office facilities Additional uses. General sales and related service uses. Personal service and custom craft uses. Food product uses. Food and beverage service uses. Plants, animals and related uses. Financial uses. Office and professional uses. Business service uses. Medical and related uses. Transportation and related uses. Educational uses. Cultural, recreational and entertainment uses. Funeral homes.

PROPERTY DETAILS



Ask for Lori McCloskey
Berger Realty Inc
109 E 55th St., Ocean City
Call: 609-399-4211
Email to: lam@bergerrealty.com

