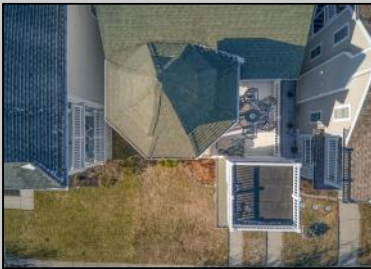




242 Simpson Ave  
 Ocean City, NJ 08226

Asking \$899,900.00



**COMMENTS**

Unique North End beauty! This 2nd floor unit is bright and ready for entertaining! Front entry stairs allows for a larger than typical front deck as well as two additional decks off a bedroom and primary bedroom. Move in ready with bay views from the back two bedrooms. This unit has been updated throughout with hardwood flooring in main living area, fresh paint, updated kitchen with island and beverage refrigerator and two updated bathrooms. The house also has an extra large storage/pantry and whole house water filter. Schedule your appointment today.

**PROPERTY DETAILS**

Exterior Vinyl	ParkingGarage One and Half Car	OtherRooms Pantry	InteriorFeatures Fireplace(s) Hardwood Floors Kitchen Center Island Master Bath Pets Allowed
Heating Forced Air Gas-Natural	Cooling Ceiling Fan(s) Central Electric	Water Public Water	Sewer Public Sewer

