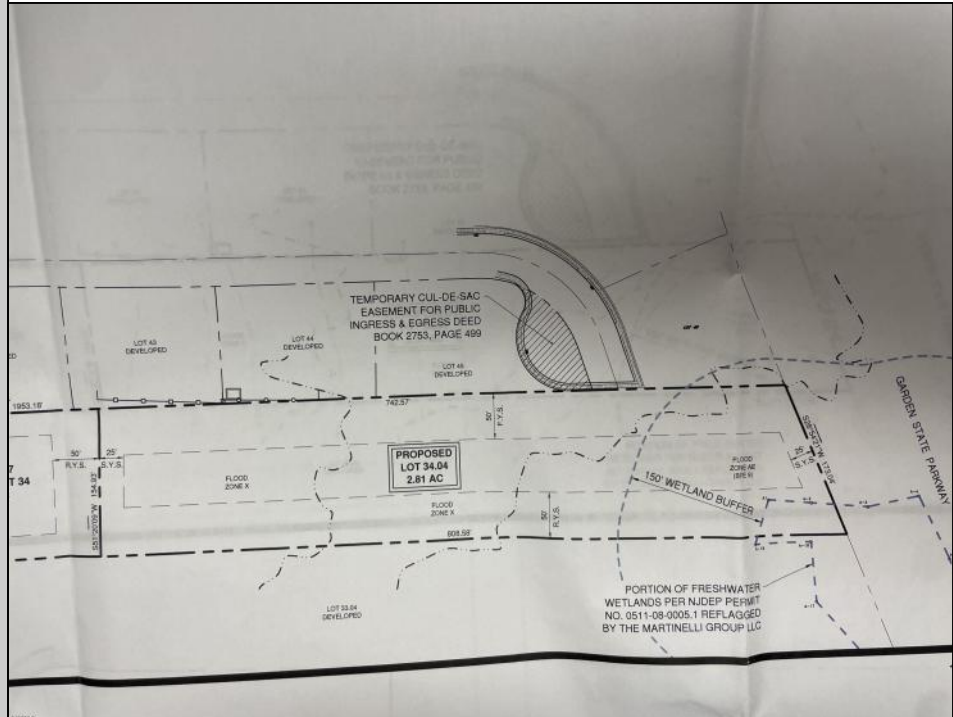


24 Timber Lane
Marmora, NJ 08223

Asking \$285,000.00



COMMENTS

OVER 2.5 ACRES! Rare opportunity to own a buildable lot in the highly sought after Marmora section of Upper Township. Total of 2.83 acres. Upper Township and OCHS school district. Cul-De-Sac location, and only 5 minutes to Ocean City beaches and boardwalk.

PROPERTY DETAILS



Ask for Tanya Pinkerton
Berger Realty Inc
3160 Asbury Avenue, Ocean City
Call: 609-399-0076
Email to: tp@bergerrealty.com

