

Berger Realty

Since 1928

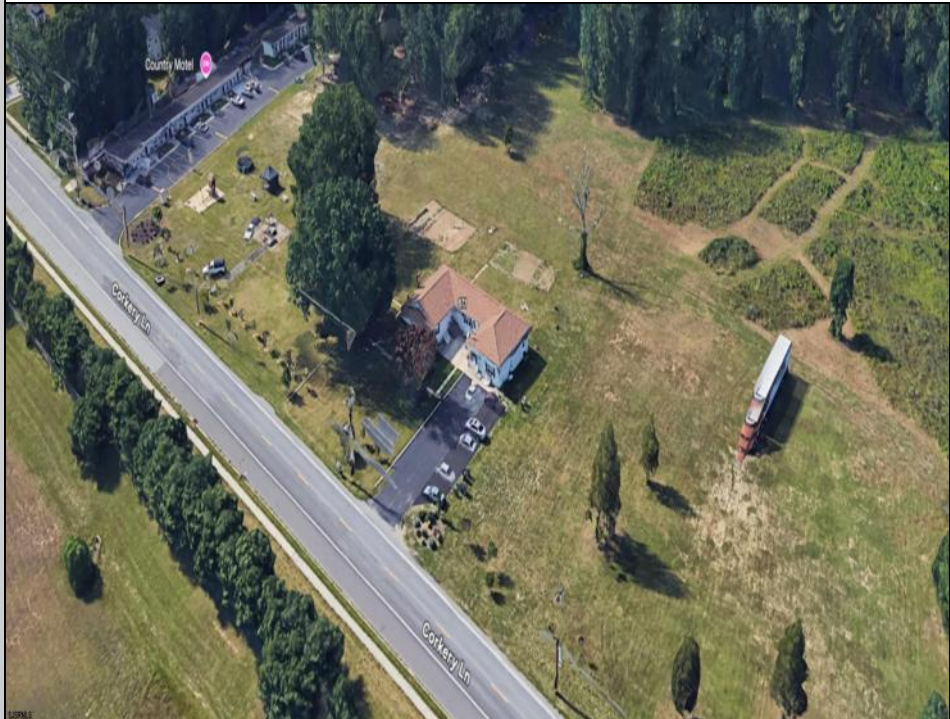
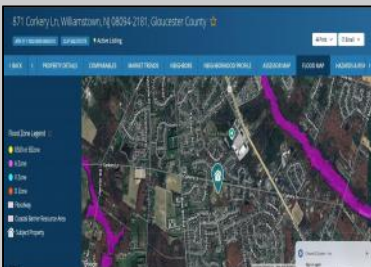


Berger Realty, Inc.
3160 Asbury Avenue
Ocean City, NJ 08226
1-877-237-4371 / 609-399-0076
info@bergerrealty.com



871 Corkery
Washington Township, NJ 08094

Asking \$1,100,000.00



COMMENTS

Prime Investment Opportunity – Multi-Family Property on 10.2 Acres! A builder's dream and an excellent investment opportunity, this 4-family residential property sits on 10.2 acres in a high-demand area with strong rental income potential. Property Features: Building Type: 4-Family Residential Total Land: 10.2 Acres Units: 4 Fully Rented (Month-to-Month Lease) Unit Breakdown: (2) 1-Bedroom Apartments – Each with a Living Room, Kitchen, and Full Bath (2) 2-Bedroom Apartments – Each with a Living Room, Kitchen, and Full Bath Condition: Well-Maintained with a Newer Roof & Water Softener Location Highlights: Surrounded by Modern Single-Family Homes Minutes from Philadelphia & Gloucester Outlets Close to Restaurants, Fitness Centers, Wawa, Walmart, Major Banks & Public Transportation Ideal for Redevelopment or Multi-Purpose Use A rare opportunity for long-term growth and investment in a prime location! Viewings by Appointment Only – A Must See!

PROPERTY DETAILS



Ask for Lauren Greiner
Berger Realty Inc
3160 Asbury Avenue, Ocean City
Call: 609-399-0076
Email to: img@bergerrealty.com

