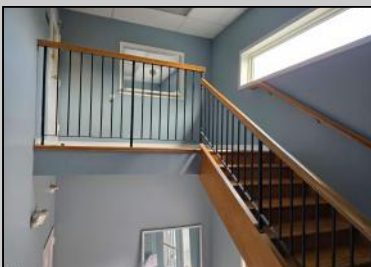
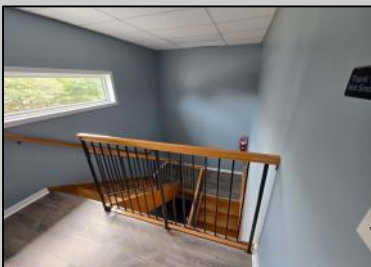




555 New Jersey
Absecon, NJ 08201

Asking \$16.00



COMMENTS

Approx. 3000sq ft office space available on second floor. Building was recently renovated. Asking \$16/sf NNN lease. Looking for atleast 3 year lease. There is No elevator to second floor. CAM charges are approx. \$7,400 per year which includes taxes, water, sewer, waste. Tenant pays utilities for unit. Security deposit of 2x monthly rent required.

PROPERTY DETAILS



Ask for Thomas Byrne
Berger Realty Inc
3160 Asbury Avenue, Ocean City
Call: 609-399-0076
Email to: tfb@bergerrealty.com

