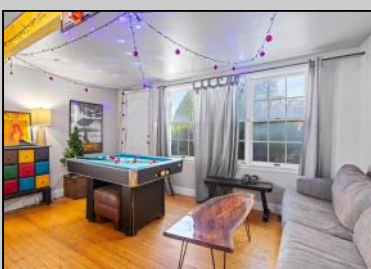




**300 Wesley  
 Ocean City, NJ 08226**

**Asking \$1,699,000.00**



SJSRMLS

**COMMENTS**

Unique house with guest suite. LARGE CORNER LOT 50 X 120 with over 3000 sq ft of useable yard space. Property is located in the historic district but CONSIDERED NON CONTRIBUTING. BUILD A DUPLEX OR HUGE HOUSE! In the quiet north end of Ocean City that is less crowded and more relaxed compared to the central part of Ocean City. This makes it a great spot for families and people looking for a more peaceful beach experience. The North End has wide, clean beaches that are less crowded than those near the boardwalk, making it an ideal place for beachgoers who prefer a more tranquil setting.

**PROPERTY DETAILS**

|                 |                    |           |                |
|-----------------|--------------------|-----------|----------------|
| OutsideFeatures | ParkingGarage      | Heating   | Cooling        |
| Curbs           | Three or More Cars | Baseboard | Ceiling Fan(s) |
| Deck            |                    |           | Window Units   |
| Patio           |                    |           |                |
| Porch           |                    |           |                |
| Sidewalks       |                    |           |                |
| Water           | Sewer              |           |                |
| Public          | Public Sewer       |           |                |



Ask for Veronica "Ronni" Vetro  
 Berger Realty Inc  
 3160 Asbury Avenue, Ocean City  
 Call: 609-399-0076  
 Email to: vrv@bergerrealty.com

