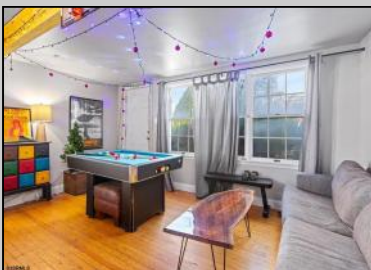




**300 Wesley
Ocean City, NJ 08226**

Asking \$1,699,000.00



SJSRMLS

COMMENTS

Unique house with guest suite. LARGE CORNER LOT 50 X 120 with over 3000 sq ft of useable yard space. Property is located in the historic district but CONSIDERED NON CONTRIBUTING. BUILD A DUPLEX OR HUGE HOUSE! In the quiet north end of Ocean City that is less crowded and more relaxed compared to the central part of Ocean City. This makes it a great spot for families and people looking for a more peaceful beach experience. The North End has wide, clean beaches that are less crowded than those near the boardwalk, making it an ideal place for beachgoers who prefer a more tranquil setting.

PROPERTY DETAILS

| | | | |
|-----------------|--------------------|-----------|----------------|
| OutsideFeatures | ParkingGarage | Heating | Cooling |
| Curbs | Three or More Cars | Baseboard | Ceiling Fan(s) |
| Deck | | | Window Units |
| Patio | | | |
| Porch | | | |
| Sidewalks | | | |
| Water | Sewer | | |
| Public | Public Sewer | | |



Ask for Joan S. Spencer
Berger Realty Inc
1330 Bay Avenue, Ocean City
Call: 609-391-1330
Email to: jss@bergerrealty.com

