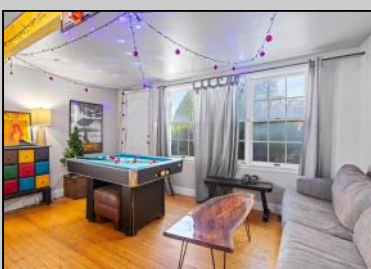




**300 Wesley
 Ocean City, NJ 08226**

Asking \$1,699,000.00



SJSRMLS

COMMENTS

Unique house with guest suite. LARGE CORNER LOT 50 X 120 with over 3000 sq ft of useable yard space. Property is located in the historic district but CONSIDERED NON CONTRIBUTING. BUILD A DUPLEX OR HUGE HOUSE! In the quiet north end of Ocean City that is less crowded and more relaxed compared to the central part of Ocean City. This makes it a great spot for families and people looking for a more peaceful beach experience. The North End has wide, clean beaches that are less crowded than those near the boardwalk, making it an ideal place for beachgoers who prefer a more tranquil setting.

PROPERTY DETAILS

OutsideFeatures	ParkingGarage	Heating	Cooling
Curbs	Three or More Cars	Baseboard	Ceiling Fan(s)
Deck			Window Units
Patio			
Porch			
Sidewalks			
Water	Sewer		
Public	Public Sewer		



Ask for Carol Cawley
 Berger Realty Inc
 1330 Bay Avenue, Ocean City
 Call: 609-391-1330
 Email to: clc@bergerrealty.com

