



**300 Wesley
 Ocean City, NJ 08226**

Asking \$1,699,000.00



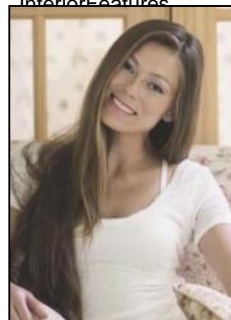
SJSRMLS

COMMENTS

LARGE CORNER LOT 50 X 120 with over 3000 sq ft of useable yard space. BUILD A DUPLEX OR HUGE HOUSE! Property is located in the historic district but considered "non contributing". In the quiet north end of Ocean City that is less crowded and more relaxed compared to the central part of Ocean City. This makes it a great spot for families and people looking for a more peaceful beach experience. The North End has wide, clean beaches that are less crowded than those near the boardwalk, making it an ideal place for beachgoers who prefer a more tranquil setting.

PROPERTY DETAILS

Exterior	OutsideFeatures	ParkingGarage	OtherRooms
Vinyl	Cabana	Three or More Cars	Den/TV Room
	Curbs		Dining Room
	Deck		Eat In Kitchen
	Fenced Yard		Great Room
	Patio		In-Law Quarters
	Porch		Primary BR on 1st floor
	Sidewalks		
	Whirlpool/Spa		
InteriorFeatures	AppliancesIncluded	AlsoIncluded	Heating
	Dishwasher	Blinds	Baseboard
	Dryer		
	Gas Stove		
	Microwave		
	Refrigerator		
	Washer		
	HotWater	Water	
	Gas	Public	



Ask for Margarita Kobilianets

Berger Realty Inc

3160 Asbury Avenue, Ocean City

Call: 609-399-0076

Email to: mak@bergerrealty.com

