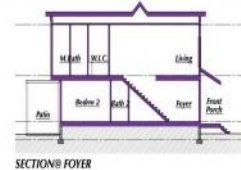
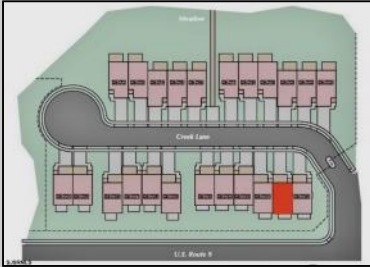


**35 Creek  
Linwood, NJ 08221**

**Asking \$849,000.00**



EAST UNITS



EAST-FRONT ELEV



EAST-RIGHT ELEV



EAST-REAR ELEV



EAST-LEFT ELEV

**COMMENTS**

Welcome to the Residences at Patcong Creek! Where Luxury Meets Tranquility in the Heart of Linwood, NJ. Unmatched Location nestled in the quaint town of Linwood, NJ, The Townhomes offer unparalleled access to both natural beauty and urban convenience. Just minutes away from the vibrant coastal community of Ocean City, & Margate. Residents can enjoy the best of both worlds: serene, creekside living and the excitement of beachside activities. The Community and Lifestyle is more than just a place to live; it's a lifestyle. The community features: Scenic Views Overlooking the tranquil Patcong Creek, these homes offer stunning westward views from the Pavilion on Premise, perfect for watching breathtaking sunsets. Close proximity to fine dining, shopping, recreational facilities, and major highways, ensuring you are never far from what you need. Step into a world of elegance and comfort. These townhomes are designed to cater to those who appreciate the finer things in life. Whether you're looking for a serene retreat or a vibrant coastal lifestyle, you'll find it here. Reserve Your New Home Today! Don't miss the opportunity to own one of these extraordinary townhomes.

**PROPERTY DETAILS**

Exterior	OutsideFeatures	ParkingGarage	OtherRooms
See Remarks	Curbs	Attached Garage	Breakfast Nook
Vinyl	Deck	Auto Door Opener	Dining Area
	Patio	Two Car	Eat In Kitchen
	Paved Road		Laundry/Utility Room
	Porch		
	Sidewalks		
	Sprinkler System		
InteriorFeatures	AppliancesIncluded	Basement	Heating
Carbon Monoxide Detector	Dishwasher	Crawl Space	Forced Air
Kitchen Center Island	Disposal		Gas-Natural
Smoke/Fire Alarm	Dryer		
Storage	Gas Stove		
Walk In Closet	Microwave		
	Refrigerator		
	Self Cleaning Oven		
	Washer		
Cooling	HotWater	Water	Sewer
Ceiling Fan(s)	Gas	Public	Public Sewer

# Berger Realty

• Since 1928 •



Berger Realty, Inc.  
3160 Asbury Avenue  
Ocean City, NJ 08226  
1-877-237-4371 / 609-399-0076  
✉ [info@bergerrealty.com](mailto:info@bergerrealty.com)



Central

