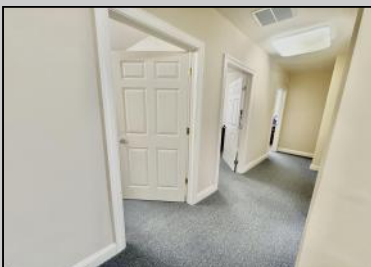




**1800 New Road
Northfield, NJ 08225**

Asking \$2,250.00



COMMENTS

Professional Office Suite Located on the Premier Intersection of New Road & Mill Road. This building provides instant recognition to your business with tremendous visibility and a high daily traffic count. Guests and clients are greeted with a grand two story atrium, elevator access and plenty of parking. Suite 201 is comprised of three generous window lined offices, reception space, corporate boardroom and a private kitchenette. Boardroom table, chairs and some office furniture can be made available. Call Lee Jerome for a private showing.

PROPERTY DETAILS

OutsideFeatures Sign	ParkingGarage Off Street Paved	InteriorFeatures Handicap Features	Heating Forced Air Gas-Natural Multi-Zoned
Cooling Central Multi-Zoned	Water Public	Sewer Public Sewer	



Ask for Linda Watts
Berger Realty Inc
1670 Boardwalk, Ocean City
Call: 609-391-0500
Email to: ljw@bergerrealty.com

